

TM 5-6115-329-25P

DEPARTMENT OF THE ARMY TECHNICAL MANUAL

ORGANIZATIONAL, DIRECT AND GENERAL SUPPORT,
AND DEPOT MAINTENANCE REPAIR PARTS
AND SPECIAL TOOLS LISTS

GENERATOR SET, GASOLINE ENGINE DRIVEN (LESS ENGINE) 0.5 KW
AC, 120/240V, 60 HERTZ, 1 PH, DOD MODEL MEP-014A,
FSN 6115-923-4469

AC, 120/240V, 400 HERTZ, 1 PH, DOD MODEL MEP-019A,
FSN 6115-940-7862

28V, DC, DOD MODEL MEP-024A,
FSN 6115-940-7867



HEADQUARTERS, DEPARTMENT OF THE ARMY
MARCH 1970

CHANGE

NO. 1

HEADQUARTERS
DEPARTMENT OF THE ARMY
WASHINGTON, D.C., 1 December 1986

Organizational, Direct and General Support, and Depot
Maintenance Repair Parts and Special Tools Lists

GENERATOR SET, GASOLINE ENGINE DRIVEN (LESS ENGINE) 0.5 KW
AC, 120/240 V, 60 HERTZ, 1 PH, DOD MODEL MEP-014A,
FSN 6115-923-4469

AC, 120/240 V, 400 HERTZ, 1 PH, DOD MODEL MEP-019A,
FSN 6115-940-7862

28 V, DC, DOD MODEL MEP-024A,
FSN 6115-940-7867

TM 5-6115-329-25P, 30 March 1970, is changed as follows:

U.S. Air Force is being incorporated to this manual. Add U.S. Air Force Tech Order number "TO 35C2-3-440-14" directly below the TM number.

Page 8, Figure 2, Item 33. Change Federal Stock No. from "5961-992-8512" to read "5961-00-752-5701". Change Ref. No. & Mfr. Code from "13213E0071-4(97403)" to read "1N1188(04713)".

Page 8, Figure 2, Item 35. Change Federal Stock No. from "5961-987-4556" to read "5961-00-950-6565". Change Ref.-No. 4 Mfr. Code from "13213E0071-3 (97403)" to read "1N1188R(81349)".

Page 12, Figure 3, Item 21. Change Federal Stock No. from "5961-936-8142" to read "5961-00-950-6565". Change Ref No. & Mfr. Code from "13213E0071-1(97403)" to read "1N1188R (81349)".

Page 12, Figure 3, Item 22. Change Federal Stock No. from "5961-936-8141" to read "5961-00-752-5701". Change Ref No. & Mfr Code from "13213E0071-2 (97403)" to read "1N1188 (04713)".

Page 19, Figure 6, Second Item 16. Change SMR Code from "PFR" to read "PB".

*TM 5-6115-329-25P

TO 35C2-3-440-14

C I

By Order of the Secretaries of the Army, the and the Air Force:

JOHN A. WICKHAM, JR.
General, United States Army
Chief of Staff

Official:

R. L. DILWORTH
Brigadier General, United States Army
The Adjutant General

CHARLES A. GABRIEL, General USAF
Chief of Staff

Official:

EARL T. O'LOUGHLIN
General, USAF, Commander, Air Force
Logistics Command

DISTRIBUTION:

To be distributed in accordance with DA Form 12-25A, Organizational, Direct and General Support Maintenance requirements for Generator Set, Gas Driven, 120/240V, 0.5KW, 1PH, (60HZ AC: MEP-014A; 400HZ AC: MEP-019A; 28V DC; MEP 024A).

☆ U.S. GOVERNMENT PRINTING OFFICE 1987-754-030/60205

ORGANIZATIONAL, DIRECT AND GENERAL SUPPORT, AND DEPOT
 MAINTENANCE REPAIR PARTS AND SPECIAL TOOLS LISTS

GENERATOR SET, GASOLINE ENGINE DRIVEN (LESS ENGINE) 0.5 KW
 AC, 120/240 V, 60 HERTZ, 1 PH, DOD MODEL MEP-014A,
 FSN 6115-923-4469

AC, 120/240 V, 400 HERTZ, 1 PH, DOD MODEL MEP-019A,
 FSN 6115-940-7862

28 V, DC, DOD MODEL MEP-024A,
 FSN 6115-940-7867

Current as of 7 November 1969

	Listing Page	Illus Figure
SECTION I. INTRODUCTION -----	iii	
II. PRESCRIBED LOAD ALLOWANCE -----	1	
III. REPAIR PARTS FOR ORGANIZATIONAL MAINTENANCE -----	2	
Group 01. Frame, Engine, Exhaust Deflector and Ground Terminal -----	2	
Engine and frame -----		1
02. Control Panels and Mounting Bracket -----	2	
Control panel assembly, DC -----		2
Control panel assembly, AC -----		3
03. Fuel System -----	3	
Fuel tank and related parts, metal tank -----		4
Fuel tank and related parts, nylon tank -----		5
SECTION IV. SPECIAL TOOLS, TEST AND SUPPORT EQUIPMENT FOR ORGANIZATIONAL MAINTENANCE (Not applicable)		
V. REPAIR PARTS FOR DS, GS, AND DEPOT MAINTENANCE -----	6	
Group 01. Frame, Engine, Exhaust Deflector and Ground Terminal -----	6	
Engine and frame -----		1
02. Control Panels and Mounting Bracket -----	6	
Control panel assembly, DC -----		2
Control panel assembly, AC -----		3
03. Fuel System -----	16	
Fuel tank and related parts, metal tank -----		4
Fuel tank and related parts, nylon tank -----		5
Generator -----	18	
04. Generator Assembly -----		6
SECTION VI. SPECIAL TOOLS, TEST AND SUPPORT EQUIPMENT FOR DS, GS, AND DEPOT MAINTENANCE (Nonapplicable)		
VII. FEDERAL STOCK NUMBER AND REFERENCE NUMBER INDEX -----	27	

*This manual supersedes TM 5-6115-329-25P, December 1968.

SECTION I.

INTRODUCTION

1. Scope

This manual lists repair parts required for the performance of organizational, direct support, general support, and depot maintenance of the generator set.

2. General

This Repair Parts List is divided into the following sections:

a. *Prescribed Load Allowance (PLA)—Section II.* A composite listing of repair parts having quantitative allowances for initial stockage at the organizational level.

b. *Repair Parts—Section III.* A list of repair parts authorized for the performance of maintenance at the organizational level in figure and item number sequence.

c. *Special Tools, Test and Support Equipment—Section IV.* (Not applicable.)

d. *Repair Parts—Section V.* A list of repair parts authorized for the performance of maintenance at the direct support, general support, and depot level in figure and item number sequence.

e. *Special Tools, Test and Support Equipment—Section VI.* (Not applicable.)

f. *Federal Stock Number and Reference Number Index—Section VII.* A list of Federal stock numbers in ascending numerical sequence, followed by a list of reference numbers appearing in all of the listings, in alpha-numeric sequence, cross-referenced to the illustration figure number and item number.

Note. Items not illustrated are cross-referenced to assembly group number.

3. Explanation of Columns

The following provides an explanation of columns in the tabular lists in Sections II through IV.

a. *Source, Maintenance, and Recoverability Codes (SMR).*

Note. Common hardware items known to be readily available in Army supply channels are assigned Maintenance codes only. Source codes, Recoverability codes, and Maintenance Allowances are not assigned this category.

(1) Source code indicates the selection status and source for the listed item. Source codes used are:

<i>Code</i>	<i>Explanation</i>
P	Repair parts which are stocked in or supplied from the GSA/DSA, or Army supply system and authorized for use at indicated maintenance categories.
M	Repair parts which are not procured or stocked, but are to be manufactured in indicated maintenance levels.
A	Assemblies which are not procured or stocked as such, but are made up of two or more units. Such component units carry individual stock numbers and descriptions, are procured and stocked separately and can be assembled to form the required assembly at indicated maintenance categories.
X	Parts and assemblies which are not procured or stocked and the mortality of which normally is below that of the applicable end item or component. The failure of such part or assembly should result in retirement of the end item from the supply system.
X1	Repair parts which are not procured or stocked. The requirement of such items will be filled by use of the next higher assembly or component.
X2	Repair parts which are not stocked. The indicated maintenance category requiring such repair parts will attempt to obtain them through cannibalization. Where such repair parts are not obtainable through cannibalization, requirements will be requisitioned, with accompanying justification, through normal supply channels.
G	Major assemblies that are procured with PEMA funds for initial issue only as exchange assemblies at DSU and GSU level. These assemblies will not be stocked above GS and DS level or returned to depot supply level.

(2) Maintenance code indicates the lowest category of maintenance authorized to install the listed item. The maintenance codes are:

<i>Code</i>	<i>Explanation</i>
O	Organizational maintenance
F	Direct support maintenance
H	General support maintenance
D	Depot maintenance

(3) Recoverability code indicates whether unserviceable items should be returned for recovery or salvage. Items not coded are expendable. Recoverability codes are:

<i>Code</i>	<i>Explanation</i>
R	Applied to repair parts (assemblies and components) which are considered economically repairable at direct and general support maintenance levels. When the maintenance capability to repair these items does not exist, they are normally disposed of at the GS level. When supply considerations dictate, some of these repair parts may be listed for automatic return to supply for depot level repair as set forth in AR 710-50. When so listed, they will be replaced by supply on an exchange basis.
S	Repair parts and assemblies which are economically repairable at DSU and GSU activities and which normally are furnished by supply on an exchange basis. When items are determined by a GSU to be uneconomically repairable they will be evacuated to a depot for evaluation and analysis before final disposition.
T	High dollar value recoverable repair parts which are subject to special handling and are issued on an exchange basis. Such repair parts are normally repaired or overhauled at depot maintenance activities.
U	Repair parts specifically selected for salvage by reclamation units because of precious metal content, critical materials, or high dollar value reusable casings or castings.

b. Federal Stock Number. Indicates the Federal stock number assigned to the item and will be used for requisitioning purposes.

c. Description. Indicates the Federal item name and any additional description of the item required. Assembly components and subassemblies are indented under major assemblies. A part number or other reference number is followed by the applicable 5-digit Federal supply code for manufacturers in parenthesis. Repair parts quantities included in kits and sets are shown in front of the repair part name. Material required for manufacture or fabrication is identified.

d. Unit of Measure (U/M). A 2 character alphabetic abbreviation indicating the amount or quantity of the item upon which the allowances are based, e.g., ft, ea, pr, etc.

e. Quantity Incorporated in Unit. Indicates the quantity of the item used in the assembly group. A "V" appearing in this column in lieu of a quantity indicates that a definite quantity cannot be indicated (e.g., shims, spacers, etc.).

f. 15-Day Organizational Maintenance Allowance.

(1) The allowance columns are divided into four subcolumns. Indicated in each subcolumn opposite the first appearance of each item is the total quantity of the items authorized for the number of equipments supported. Subsequent appearances of the same item will have the letters "REF" in the allowance column. To locate the referenced item, locate the FSN or reference number in the index. The earliest figure and item number is the referenced item. Items authorized for use as required but not for the initial stockage are identified with an asterisk in the allowance column.

(2) The quantitative allowance for the organizational level of maintenance represents one initial prescribed load for a 15-day period for the number of equipments supported. Units authorized additional prescribed loads, multiply the number of prescribed loads by the quantity in the appropriate density column to determine the number of repair parts authorized.

(3) To determine allowances when supporting more than 100 of these equipments: First, divide the number of equipments supported by 100 by moving the decimal two spaces left; second, multiply the result by the quantity in the 51-100 density column. Example, authorized allowance for 51-100 equipments is 12; for 140 equipments, multiply 12 by 1.40 or 16.80 rounded off to 17 parts required.

(4) Subsequent changes to allowances will be limited as follows: No change in the range of items is authorized. If additional items are considered necessary, recommendation should be forwarded to the U. S. Army Mobility Equipment Command for exception or revision to the allowance list. Revisions to the range of items authorized will be made by the U. S. Army Mobility Equipment Command based upon engineering experience, demand data, or TAERS information.

g. 30-Day DS/GS Maintenance Allowances.

Note. Allowances in GS Column are for GS maintenance only.

(1) The allowance columns are divided into three subcolumns. Indicated in each subcolumn, opposite the first appearance of each item, is the total quantity of items authorized for the number of equipments supported. Subsequent appearances of the same item will have the letters "REF" in the applicable allowance column. To locate the referenced item locate the FSN or reference num-

ber in the index. The earliest figure and item number is the referenced item. Items authorized for use as required but not for initial stockage are identified with an asterisk in the allowance column.

(2) The quantitative allowances for DS/GS levels of maintenance will represent initial stockage for a 30-day period for the number of equipments supported.

(3) To determine allowances when supporting more than 100 of these equipments: First, divide the number of equipments supported by 100 by moving the decimal two places left; second, multiply the result by the Quantity in the 51-100 density column. Example, authorized allowance for 51-100 equipments is 40; for 150 equipments multiply 40 by 1.50 or 60 parts required.

h. I-Year Allowance Per 100 Equipments/Contingency Planning Purposes. Indicates opposite the first appearance of each item the total quantity required for distribution and contingency planning purposes. The range of items indicates total quantities of all authorized items required to provide for adequate support of 100 equipments for one year. Subsequent appearances of the same item will have the letters "REF" in the allowance column.

i. Depot Maintenance Allowance Per 100 Equipments. Indicates opposite the first appearance of each item the total quantity authorized for depot maintenance of 100 equipments. Subsequent appearances of the same item will have the letters "REF" in the allowance column, Items authorized for use as required but not for initial stockage are identified with an asterisk in the allowance column.

j. Illustration. This column is divided as follows :

(1) *Figure number.* Indicates the figure number of the illustration in which the item is shown.

(2) *Item number.* Indicates the callout number used to reference the item in the illustration.

4. Special Information

a. Identification of the usable on codes included in the description column of this publication are:

Code	<i>Used on</i>
Uncoded	Applies to all models.
A	0.5 KW, Military Design 28 Volt DC, DOD Model MEP-024A, serial number range JC66-001 through JC66-0600, formerly Military Model DC-1.5-MD/28, FSN 6115-917-7355.

<i>Code</i>	<i>Used on</i>
B	0.5 KW, Military Design, 400 Hertz, DOD Model MEP-019A, serial number range JB66-001 through JB66-4370, formerly Military Model HF-0.5-MD, FSN 6115-917-7354.
C	0.5 KW, Military Design, 60 Hertz, DOD Model MEP-014A, serial number range BA68-001 through BA68-0951, formerly Military Model SF-0.5-MD, FSN 6115-935-8694.

b. Explanation of Military Design Generator Set, serial numbers. Generator Set: The serial number of a Military Designed generator set (end item) is comprised of four basic alpha-numeric characters to which is appended a numeric series corresponding in quantity to the number of set furnished.

c. First character (alpha) specifies the manufacturer. Definition as follows:

- (1) J—Rett Electronics Inc
- (2) B—Bogue Electric Manufacturing Co

d. Second character (alpha) denotes Hertz or Direct Current.

- (1) A—60 Hertz
- (2) B—400 Hertz
- (3) C—28 Volt DC

e. Third and fourth characters (numeric) represent the year of initial delivery.

f. Fifth, sixth, seventh and eighth characters represent the unit number sequence of sets manufactured.

g. Example: JB66-0001 or JB66-4000 (Rett Electronics Inc., 400 Hertz, year of initial delivery 1966, first and fourth thousandth set manufactured).

h. Explanation of Department of Defense (DOD) Model designations. DOD family of Mobile Electric Power sources MEP Model Number assignment.

Tactical			
Utility			
Rating	KW	Spark Ignition	Engine Driven (SIED)
0.5		60 Hz	400 Hz
		014A	019A
			024A

i. When requisitioning X2 parts, complete serial numbers of end items must be given along with end item FSN.

j. Repair parts mortality has been based on 2000 hours operation per year.

k. Parts which require manufacture or assembly at a category higher than that authorized for installation will indicate in the source column the higher category.

l. The following publications pertain to generator set and its components:

TM 5-6115-329-15	Operator, Organizational, DS, GS and Depot Maintenance Manual
TM 5-2805-256-14	Military Standard Engine, Operator, Organizational, DS and GS Maintenance Manual
TM 5-2805-256-24P	Military Standard Engine, Organizational, DS and GS Parts Manual
LO 5-2805-256-12	Lubrication Order

m. The same illustrations are used to illustrate the repair parts listed in both organizational maintenance section and direct and general support and depot maintenance section.

5. How to Locate Repair Parts

a. When Federal stock number or reference number is unknown:

(1) *First.* Using the table of contents determine the assembly group within which the repair part belongs. This is necessary since illustrations are prepared for assembly groups, and listings are divided into the same groups.

(2) *Second.* Find the illustration covering the assembly group to which the repair part belongs.

(3) *Third.* Identify the repair part on the illustration and note the illustration figure and item number of the repair part.

(4) Using the Repair Parts Listings, find the assembly group to which the repair part belongs and locate the illustration figure and item number noted on the illustrations.

b. When Federal stock number or reference is known:

(1) *First.* Using the Index of Federal Stock Numbers and Reference Numbers find the pertinent Federal stock number or reference number. This index is in ascending FSN sequence followed by a list of reference numbers in alpha-numeric sequence, cross-referenced to the illustration figure number and item number.

(2) *Second.* Using the Repair Parts Listing, find the assembly group of the repair part and the illustration figure number and item number referenced in the Index of Federal Stock Numbers and Reference Numbers.

c. When the Federal stock number or reference number is known and the repair part is not illustrated:

(1) *First.* Using the Index of Federal Stock Numbers and Reference Numbers find the pertinent Federal stock number or reference number in the section titled Items not Illustrated and note the group number. This section is in ascending FSN sequence followed by a list of reference numbers in alpha-numeric sequence, cross-referenced to assembly group number.

(2) *Second.* Using the Table of Contents, locate the assembly group number and page number.

(3) *Third.* Using the applicable group number and page number, locate the pertinent stock number or reference number in the Repair Parts Listing. Items which are not illustrated are listed at the end of the assembly group to which they belong.

6. Federal Supply Codes for Manufacturers

Code	Manufacturer
00000	___ Ordnance Corps
10100	___Flow Products Inc.
44655	___Ohmite Mfg. Co.
76005	___Lord Mfg. Co.
81336	___ Chief of Engineers
81349	___ Military Specifications
92071	___Rett Electronics Inc.
96906	___Military Standards
97403	___Army Engineer Research and Development Laboratories
99246	___Ram Meter Inc.

7. Recommendations for Maintenance Publication Improvements

Report of errors, omissions, and recommendations for improving this publication by the user is encouraged. Reports should be submitted on DA Form 2028 (Recommended Changes to Publications) and forwarded direct to Commanding General, U. S. Army Mobility Equipment Command, ATTN: AMSME-MPP, 4300 Goodfellow Boulevard, St. Louis, Mo. 63120.

(1) FEDERAL STOCK NUMBER	(2) DESCRIPTION	USABLE ON CODE	(3) 15-DAY ORGANIZATIONAL MAINTENANCE ALLOWANCE			
			(A) 1-5	(B) 6-20	(C) 21-50	(D) 51-100
SECTION II - PRESCRIBED LOAD ALLOWANCE						
GROUP 02 - CONTROL PANELS AND MOUNTING BRACKET						
5905-688-4186	REHEOSTAT: VOLTAGE CONTROL 13213E0099-1 (97403)	BC				2
5905-764-4885	RHEOSTAT ASSEMBLY: VOLTAGE CONTROL RP061SB501KK (81349)	A				2
5930-557-5175	SWITCH, TOGGLE: VOLTAGE MS25126E3 (96906)	BC				2
5930-655-1575	SWITCH, TOGGLE: LOAD MS35099-22 (96906)	C				2
5930-615-7897	SWITCH, TOGGLE: LOAD MS25126E3 (96906)	B				2
5935-860-7319	RECEPTACLE, DUPLEX, FLUSH	C			2	2
GROUP 03 - FUEL SYSTEM						
2910-472-5526	LINE ASSEMBLY, FUEL: FOR METAL TANK FP16715-1 (10100)				2	2
2910-510-6673	STRAINER ASSEMBLY, FUEL 13214E8867 (97403)				2	2
2910-904-2645	CAP ASSEMBLY, FUEL TANK 13214E0015 (97403)				2	2
2910-936-5015	LINE ASSEMBLY, FUEL: FOR NYLON TANK 13213E0056 (97403)				2	2
2910-065-6793	STRAINER, FUEL TANK 13208E5834 (97403)				2	2

(1)	(2)	(3)	(4)	(5)	(6)				(7)		
SMR STOCK CODE	FEDERAL STOCK NUMBER	DESCRIPTION REF NUMBER & MFR CODE	USABLE ON CODE	UNIT OF MEAS	QTY INC IN UNIT	15-DAY ORGANIZATIONAL MAINTENANCE ALW (A) (B) (C) (D)				(A) FIG. NO.	(B) ITEM NO.
SECTION III - REPAIR PARTS FOR ORGANIZATIONAL MAINTENANCE											
GROUP 01 - FRAME, ENGINE, EXHAUST DEFLECTOR AND GROUND TERMINAL											
P O	6150-057-6751	LEAD, ELECTRICAL, BRAIDED WIRE: FRAME TO ENGINE 13208E5853-21 (97403)		EA	1	*	*	*	*	1	4
O	5310-088-1251	NUT, SELF-LOCKING, HEXAGON: EXHAUST DEFLECTOR MTG, 1/4-20 THD SIZE MS51922-1 (96906)		EA	2					1	8
O	5305-827-1520	SCREW, CAP, HEXAGON HEAD: EXHAUST DEFLECTOR MTG, 1/4-20 THD SIZE, 3/4 IN. LG MS51099-6 (96906)		EA	2					1	9
X20		DEFLECTOR, EXHAUST 13213E0057 (97403)		EA	1					1	10
P O	5940-926-9827	TERMINAL, LUG: GROUND, 1/4-20 THD SIZE, 1/2 IN. THD LENGTH, 1 7/16 IN. 0/A LG 13213E0051 (97403)		EA	1	*	*	*	*	1	11
O	5310-550-1130	WASHER, LOCK: TERMINAL, 1/4 IN. SCREW SIZE MS35333-40 (96906)		EA	1					1	12
P O	6115-990-8770	COVER, CANVAS 13213E0083 (97403)		EA	1	*	*	*	*		
GROUP 02 - CONTROL PANELS AND MOUNTING BRACKET											
O	5310-088-1251	NUT, SELF-LOCKING, HEXAGON: GROUND STRAP TO BOX, 1/4-20 THD SIZE MS51922-1 (96906)	A	EA	1					2	9
O	5310-167-0721	WASHER, LOCK: GROUND STRAP TO BOX, 5/16 IN. SCREW SIZE MS35333-41 (96906)	A	EA	2					2	10
O	5305-696-5115	SCREW, ASSEMBLED WASHER: GROUND STRAP TO BOX, 1/4-20 THD SIZE, 1/2 IN. LG 186491 (00000)	A	EA	1					2	11
P O	2590-944-6254	LEAD, ELECTRICAL: CONTROL PANEL TO GENERATOR 13208E5853-20 (97403)	A	EA	1	*	*	*	*	2	12
X20		PLATE, WIRING, DIAGRAM 13213E0104 (97403)	A	EA	1					2	19
X20		PLATE, OPERATING INSTRUCTIONS 13213E0067 (97403)	A	EA	1					2	20
O	5310-925-9645	NUT, SELF-LOCKING, HEXAGON: METER MTG, NO. 4-40 THD SIZE MS21083N04 (96906)	A	EA	6					2	29
O	5305-889-2999	SCREW, MACHINE: METER MTG, NO. 4-40 THD SIZE, 1/2 IN. LG MS35206-217 (96906)	A	EA	6					2	41
P O	6625-068-0562	METER, INDICATOR, CURRENT 13208E8534 (97403)	A	EA	1	*	*	*	*	2	42
P O	6625-078-6377	VOLT METER: DC 13208E8535 (97403)	A	EA	1	*	*	*	*	2	43
P O	5355-959-3161	KNOB: CONTROL: RHEOSTAT MS91528-0K1B (96906)	A	EA	1	*	*	*	*	2	44
O	5305-717-6949	SETScrew: KNOB MTG, NO. 4-40 THD SIZE, 3/16 IN. LG MS51963-10 (96906)	A	EA	2					2	45
P O	5905-764-4885	RHEOSTAT ASSEMBLY: VOLTAGE CONTROL RP061SB501KK (81349)	A	EA	1	*	*	*	2	2	46

(1) SMR CODE	(2) FEDERAL STOCK NUMBER	(3) DESCRIPTION REF NUMBER & MFR CODE	(4) USABLE ON CODE	(5) UNIT OF MEAS	(6) QTY INC IN UNIT	(6) 15-DAY ORGANIZATIONAL MAINTENANCE ALW				(7) ILLUS- TRATION (A) (B) FIG. ITEM NO. NO.	
						(A)	(B)	(C)	(D)	(A)	(B)
P O	5925-938-2840	CIRCUIT BREAKER 13213E0137 (97403)	A	EA	1	*	*	*	*	2	47
O	5310-550-1130	WASHER, LOCK: GROUND LEAD MTG MS35333-40 (96906)	BC	EA	1					3	1
O	5310-088-1251	NUT,SELF-LOCKING, HEXAGON: GROUND LEAD MTG, 1/4-20 THD SIZE MS51922-1 (96906)	BC	EA	1					3	2
O	5306-018-6491	BOLT, ASSEMBLED WASHER: GROUND LEAD MTG, 1/4-20 THD SIZE, 1/2 IN. LG 186491 (00000)	BC	EA	1					3	3
P O	2590-944-6254	LEAD, ELECTRICAL: CONTROL PANEL GROUND 13208E5853-20 (97403)	BC	EA	1	REF	REF	REF	REF	3	4
X20		PLATE, WIRING, DIAGRAM 13213E0181 (97403)	B	EA	1					3	9
X20		PLATE, WIRING, DIAGRAM 13213E0068 (97403)	C	EA	1					3	9
X20		PLATE, OPERATING INSTRUCTION 13213E0067 (97403)	BC	EA	1					3	10
O	5310-905-8451	NUT,SELF-LOCKING, HEXAGON: RECEPTACLE MTG, NO. 6-32 THD SIZE MS21083N06 (96906)	C	EA	2					3	14
O	5305-889-3000	SCREW,MACHINE: RECEPTACLE MTG, NO. 6-32 THD SIZE, 1/2 IN. LG MS35206-230 (96906)	C	EA	2					3	15
O	5310-925-9645	NUT, PLAIN, HEXAGON: METER MTG, NO. 4-40 THD SIZE MS21083N04 (96906)	BC	EA	6					3	18
P O	5930-557-5175	SWITCH, TOGGLE: VOLTAGE MS25126E3 (96906)	BC	EA	1	*	*	*	2	3	28
O	5305-889-2999	SCREW, MACHINE: METER MTG, NO. 4-40 THD SIZE, 1/2 IN. LG MS35206-217 (96906)	BC	EA	3					3	30
P O	6625-079-7443	METER, VOLTAGE; AC 13208E8524 (97403)	BC	EA	1	*	*	*	*	3	31
P O	5930-615-7897	SWITCH, TOGGLE: LOAD MS35059-31 (96906)	B	EA	1	*	*	*	2	3	32
P O	5930-655-1575	SWITCH, TOGGLE: LOAD MS35059-22 (96906)	C	EA	1	*	*	*	2	3	32
P O	5355-959-3161	KNOB, CONTROL: RHEOSTAT MS91528-OK1B (96906)	BC	EA	1	*	*	*	*	3	33
O	5305-717-6494	SETSCREW: CONTROL KNOB, NO. 4-40 THD SIZE, 3/16 IN. LG MS51963-10 (96906)	BC	EA	2					3	34
P O	5905-688-4186	RHEOSTAT: VOLTAGE CONTROL 13213E0099-1 (97403)	BC	EA	1	*	*	*	2	3	35
P O	5935-860-7319	RECEPTACLE, DUPLEX, FLUSH	C	EA	1	*	*	2	2	3	36
GROUP 03 - FUEL SYSTEM											
P O	2910-472-5526	LINE ASSEMBLY, FUEL (USED WITH METAL TANK ONLY) FP16715-13 (10100)		EA	1	*	*	2	2	4	1
X20		CAP, PLUG: SELECTOR VALVE ELBOW, 1/2-20 THD SIZE		EA	1					4	2
X20		ELBOW, PIPE TO TUBE: SELECTOR VALVE ONE END MALE, 5/16 IN. TUBE, OTHER END FEMALE, 1/8-27 PIPE THREAD MS39161-4 (96906)		EA	1					4	3

(1) SMR CODE	(2) FEDERAL STOCK NUMBER	(3) DESCRIPTION REF NUMBER & MFR CODE	(4) USABLE ON CODE	(5) UNIT OF MEAS	(6) 15-DAY ORGANIZATIONAL MAINTENANCE ALW				(7) ILLUS- TRATION		
					QTY INC IN UNIT	(A) 1-5	(B) 6-20	(C) 21-50	(D) 51-100	(A) FIG. NO.	(B) ITEM NO.
P O	2910-510-6673	STRAINER ASSEMBLY: FUEL 13214E8867 (97403)		EA	1	*	*	2	2	4	4
P O	4820-925-7374	VALVE, SELECTOR: FUEL 13208E5768 (97403)		EA	1	*	*	*	*	4	5
O	5310-807-1467	NUT, SELF-LOCKING, HEXAGON: STRAP MTG, NO. 10-32 THD SIZE MS21042-3 (96906) (USED WITH METAL TANK ONLY)		EA	2					4	6
O	5305-993-1851	SCREW, MACHINE: FUEL TANK STRAP, NO. 10-32 THD SIZE, 1 IN. LG MS35207-267 (96906) (USED WITH METAL TANK ONLY)		EA	2					4	7
X20		STRAP, FUEL TANK R3190-57 (92071) (USED WITH METAL TANK ONLY)		EA	2					4	8
X20		CUSHION: FUEL TANK STRAP R3190-65 (92071) (USED WITH METAL TANK ONLY)		EA	2					4	9
X20		CUSHION: FUEL TANK, BOTTOM R3190-66 (92071) (USED WITH METAL TANK ONLY)		EA	1					4	10
O	5310-088-1251	NUT, SELF-LOCKING, HEXAGON: FUEL TANK TO BRACKET, 1/4-20 THD SIZE MS51922-1 (96906) (USED WITH METAL TANK ONLY)		EA	1					4	11
P O	6150-057-6749	LEAD, ELECTRICAL: FUEL TANK GROUND 13208E5853-9 (97403) (USED WITH METAL TANK ONLY)		EA	1	*	*	*	*	4	12
O	5306-018-7979	BOLT, ASSEMBLED WASHER: BRACKET TO TANK AND GENERATOR, 1/4-20 THD SIZE, 1/2 IN. LG 187979 (00000) (USED WITH METAL TANK ONLY)		EA	3					4	13
O	5320-584-9078	RIVET, SOLID: WIRE ROPE TO FUEL TANK CAP, 1/8 IN. DIA, 1/4 IN. LG MS20470A4-4 (96906)		EA	1					4	14
X20		WIRE ROPE ASSEMBLY: FUEL TANK CAP, 10 1/8 IN. LG MS17351-8 (96906)		EA	1					4	15
X20		CAP, FUEL TANK (WHEN DEPLETED, FOR REPLACEMENT USE CAP ASSEMBLY, FSN 2910-904-2645, REF FIG 5 ITEM 5)		EA	1					4	16
P O	2910-065-6793	STRAINER, FUEL TANK 13208E5834 (97403)		EA	1	*	*	2	2	4	17
P O	2910-936-5016	TANK ASSEMBLY, FUEL 13213E0062 (97403) (WHEN DEPLETED REPLACE WITH FUEL TANK ASSEMBLY, P/N 13217E6400, (97403)		EA	1	*	*	*	*	4	18
X20		BRACKET, TANK, UPPER 13213E0060 (97403) (USED WITH METAL TANK ONLY)		EA	1					4	19
X20		BRACKET, TANK, LOWER 13213E0058 (97403) (USED WITH METAL TANK ONLY)		EA	1					4	20
P O	2910-936-5015	LINE ASSEMBLY, FUEL 13213E0056 (97403) (USED WITH NYLON FUEL TANK ONLY)		EA	1	*	*	2	2	5	1
O	5306-018-7979	BOLT, ASSEMBLED WASHER: FUEL TANK BRACKET MTG, 1/4-20 THD SIZE, 1/2 IN. LG 187979 (00000)	C	EA	2					5	2
O	5305-059-3663	SCREW, MACHINE: FUEL TANK STRAP MTG, NO. 10-32 THD SIZE, 1 IN. LG MS51958-67 (96906)		EA	4					5	3

(1)	(2)	(3)	(4)	(5)	(6)				(7)		
SMR CODE	FEDERAL STOCK NUMBER	DESCRIPTION REF NUMBER & MFR CODE	USABLE ON CODE	UNIT OF MEAS	QTY INC IN UNIT	15-DAY ORGANIZATIONAL MAINTENANCE ALW				ILLUS- TRATION	
						(A)	(B)	(C)	(D)	(A)	(B)
						1-5	6-20	21-50	51-100	NO.	NO.
X20		STRAP, TANK 13217E6387-3 (97403)		EA	2					5	4
P O	2910-904-2645	CAP ASSEMBLY: FUEL TANK 13214E0115 (97403)		EA	1	*	*	2	2	5	5
X20		HOOK, CAP, FUEL TANK CHAIN MS87006-2 (96906)		EA	2					5	6
M O		CHAIN: FUEL TANK CAP MANUFACTURE FROM:		EA	1					5	7
X20		CHAIN, 1 FT REQUIRED, P/N MS17311-1 (96906) CAP, FUEL TANK 13213E4065 (97403)		EA	1					5	8
P O	2910-065-6793	STRAINER, FUEL TANK 13208E5834 (97403)	C	EA	1	REF	REF	REF	REF	5	9
P O		TANK, FUEL, NYLON 13217E5391 (97403)	C	EA	1	*	*	*	*	5	10
X20		BRACKET, TANK, UPPER 13217E6399 (97403)	C	EA	1					5	11
X20		NUT, PRESS: BRACKET, NO. 10-32 THD SIZE 13211E4854-4 (97403)		EA	2					5	12
X20		BRACKET, TANK, LOWER 13217E6398 (97403)	C	EA	1					5	13
X20		INSERT, THREADED: BRACKET, NO. 10-32 THD SIZE MS124655 (96906)		EA	2					5	14

(1)	(2)	(3)	(4)	(5)	(6)			(7)			(8)	(9)	(10)	
SMR	FEDERAL	DESCRIPTION			30-DAY DS MAINT			30-DAY GS MAINT			1-YR	DEPOT	ILLUS-	
CODE	STOCK		USABLE	UNIT	QTY	ALLOWANCE	ALLOWANCE	ALLOWANCE	ALLOWANCE	ALW	MAINT	TRATION		
	NUMBER		ON	OF	(A)	(B)	(C)	(A)	(B)	(C)	PER	ALW	(A)	(B)
		REF NUMBER & MFR CODE	CODE	MEAS	UNIT	1-20	21-50	51-100	1-20	21-50	51-100	EQUIP	100	FIG. ITEM
												CNTGY	EQUIP	NO. NO.
		SECTION V - REPAIR PARTS FOR DS, GS, AND DEPOT MAINTENANCE												
		GROUP 01 - FRAME, ENGINE, EXHAUST DEFLECTOR AND GROUND TERMINAL												
F	5306-142-4854	BOLT,MACHINE: BRACKET, SHOCK MOUNT AND GENERATOR TO ENGINE, 5/16-24 THD SIZE, 5/8 IN. LG MS51096-331 (96906)		EA	12									1 1
F	5310-514-6674	WASHER, LOCK: BRACKET,SHOCK MOUNT AND GENERATOR TO ENGINE, 5/16 IN. SCREW SIZE MS35335-34 (96906)		EA	12									1 2
P F	5340-990-8804	MOUNT, ENGINE: RUBBER 13213E0052 (97403)		EA	4	2	2	3	2	2	3	40	40	1 3
P O	6150-057-6751	LEAD,ELECTRICAL, BRAIDED WIRE: FRAME TO ENGINE 13208E5853-21 (97403)		EA	1	*	*	*	*	*	*	5	10	1 4
X2F		FRAME, CARRYING 13213E0075 (97403)		EA	1									1 5
F	5306-018-7979	BOLT, ASSEMBLED WASHER: ENGINE MTG, 1/4-20 THD SIZE, 3/4 IN. LG 187979 (00000)		EA	12									1 6
X2F		SUPPORT, LEFT HAND: GENERATOR AND ENGINE MTG 13213E0024 (97403)		EA	2									1 7
X2F		SUPPORT, RIGHT HAND: GENERATOR AND ENGINE MTG 13213E0023 (97403)		EA	2									1 7
O	5310-088-1251	NUT, SELF-LOCKING, HEXAGON: EXHAUST DEFLECTOR MTG, 1/4-20 THD SIZE MS51922-1 (96906)		EA	2									1 8
O	5305-827-1520	SCREW, CAP, HEXAGON HEAD: EXHAUST DEFLECTOR MTG, 1/4-20 THD SIZE, 3/4 IN. LG MS51099-6 (96906)		EA	2									1 9
X2O		DEFLECTOR, EXHAUST 13213E0057 (97403)		EA	1									1 10
P O	5940-926-9827	TERMINAL, LUG: GROUND, 1/4-20 THD SIZE, 1/2 IN. THD LENGTH, 1 7/16 IN. O/A LG 13213E0051 (97403)		EA	1	*	*	*	*	*	*	5	5	1 11
O	5310-550-1130	WASHER, LOCK: TERMINAL, 1/4 IN. SCREW SIZE MS35333-40 (96906)		EA	1									1 12
P F R	2805-068-7510	ENGINE, GASOLINE: MILITARY STANDARD MODEL 1A08111, 4 CY, 1 1/2 HP 1A08111 (81336) (FOR ENGINE REPAIR PARTS REFER TO TM5-2805-256-24P)		EA	1	*	*	*	*	*	*	5	5	1 13
P O	6115-990-8770	COVER, CANVAS 13213E0083 (97403)	B	EA	1	*	*	*	*	*	*	6	6	
		GROUP 02 - CONTROL PANELS AND MOUNTING BRACKET												
F	5310-807-1466	NUT, SELF-LOCKING, HEXAGON: CONTROL PANEL TO BRACKET, NO. 8-32 THD SIZE MS21042-08 (96906)		E	2									2 1
F	5310-559-0070	WASHER, LOCK: CONTROL PANEL MTG, NO. 8 SCREW SIZE MS35333-38 (96906)		EA	6									2 2

(1)	(2)	(3)	(4)	(5)	(6)	(7)	(8)	(9)	(10)				
SMR	FEDERAL	DESCRIPTION		QTY	30-DAY DS MAINT	30-DAY GS MAINT	1-YR	DEPOT	ILLUS-				
CODE	STOCK		USABLE	UNIT	ALLOWANCE	ALLOWANCE	ALW	MAINT	TRATION				
	NUMBER	REF NUMBER & MFR CODE	ON	OF	(A)	(B)	(C)	ALW	(A)				
			CODE	MEAS	1-20	21-50	51-100	PER	(B)				
				UNIT	(A)	(B)	(C)	100	(A)				
								EQUIP	(B)				
								100	FIG. ITEM				
								CNTGY	NO. NO.				
								EQUIP					
F	5310-809-8544	WASHER, FLAT: CONTROL PANEL TO BRACKET, NO. 8 SCREW SIZE MS27183-7 (96906)		EA	4					2	3		
F	5305-984-6197	SCREW, MACHINE: CONTROL PANEL TO BRACKET, NO. 8-32 THD SIZE, 1 IN. LG MS35206-249 (96906)		EA	2					2	4		
F	5305-984-6195	SCREW, MACHINE: CONTROL PANEL MTG, NO. 8-32 THD SIZE, 3/4 IN. LG MS35206-247 (96906)		EA	2					2	5		
X2F		SLEEVE: PANEL VENT TUBE 13213E0151 (97403)		EA	2					2	6		
F	5320-958-1154	RIVET, BLIND: PLATE MTG, 0.094 IN. DIA, 1/8 IN. LG MS20604AD4HA2 (96906)		EA	4					2	7		
X2F		PLATE, IDENTIFICATION: CORP OF ENGINEERS, 0.5 KW, 400 HZ 13213E4208 (97403)	AB	EA	1					2	8		
X2F		PLATE, IDENTIFICATION: CORP OF ENGINEERS, 0.5 KW, 60 HZ 13217E6401 (97403)	C	EA	1					2	8		
P F	6110-936-5022	PANEL ASSEMBLY, CONTROL: 28V GENERATOR 13213E0106 (97403)	A	EA	1	*	*	*	*	5	5	2	
O	5310-088-1251	NUT, SELF-LOCKING, HEXAGON: GROUND STRAP TO BOX, 1/4-20 THD SIZE MS51922-1 (96906)	A	EA	1					2	9		
O	5310-167-0721	WASHER, LOCK: GROUND STRAP TO BOX, 5/16 IN. SCREW SIZE MS35333-41 (96906)	A	EA	2					2	10		
O	5305-696-5115	SCREW, ASSEMBLED WASHER: GROUND STRAP TO BOX, 1/4-20 THD SIZE, 1/2 IN. LG 186491 (00000)	A	EA	1					2	11		
P O	2590-944-6254	LEAD, ELECTRICAL: CONTROL PANEL TO GENERATOR 13208E5853-20 (97403)	A	EA	1	*	*	*	*	5		2	12
F	5305-727-5751	SCREW, ASSEMBLED WASHER: CONTROL BOX WRAPPER, NO. 10-32 THD SIZE, 3/8 IN. LG 441375 (00000)	A	EA	9					2	13		
F	5320-721-5210	RIVET, SOLID: HINGE AND CAPACITOR MTG, 1/8 IN. DIA, 5/16 IN. LG MS2047A4-5 (96906)	A	EA	14					2	14		
X2F		HINGE: CONTROL BOX COVER 13213E0013 (97403)	A	EA	1					2	15		
X2F		WRAPPER, PANEL: CONTROL BOX 13213E0034 (97403)	A	EA	1					2	16		
X2F		RETAINER: CONTROL BOX COVER STUD 13213E5162 (97403)	A	EA	1					2	17		
X2F		STUD, FASTENER: CONTROL BOX COVER 13213E5163-3 (97403)	A	EA	1					2	18		
X2O		PLATE, WIRING, DIAGRAM 13213E0104 (97403)	A	EA	1					2	19		
X2O		PLATE, OPERATING INSTRUCTIONS 13213E0067 (97403)	A	EA	1					2	20		
X2F		COVER, CONTROL BOX 13213E0138 (97403)	A	EA	1					2	21		

(1) SMR CODE	(2) FEDERAL STOCK NUMBER	(3) DESCRIPTION REF NUMBER & MFR CODE	(4) USABLE ON CODE	(5) UNIT OF MEAS	(6) QTY INC IN UNIT	30-DAY DS MAINT ALLOWANCE			30-DAY GS MAINT ALLOWANCE			(8) 1-YR ALW PER 100 EQUIP CNTGY	(9) DEPOT MAINT ALW PER 100 EQUIP	(10) ILLUS- TRATION (A) (B) FIG. ITEM NO. NO.	
						(A)	(B)	(C)	(A)	(B)	(C)	(A)	(B)		
F	5310-905-8451	NUT, SELF-LOCKING, HEXAGON: HEAT SINK, TERMINAL BOARD, VOLTAGE REGULATOR AND SUPPORT MTG, NO. 6-32 THD SIZE MS21083N06 (96906)	A	EA	14									2	22
F	5305-889-3000	SCREW, MACHINE: HEAT SINK AND SUPPORT MTG, NO. 6-32 THD SIZE, 1/2 IN. LG MS35206-230 (96906)	A	EA	6									2	23
F	5305-984-4992	SCREW, MACHINE: TERMINAL BOARD MTG, NO. 6-32 THD SIZE, 3/4 IN. LG MS35206-232 (96906)	A	EA	2									2	24
X2F		TERMINAL BOARD: FIELD FLASHING TYPE37TB11 (81349)	A	EA	1									2	25
P F	6115-223-2504	SUPPORT, HEAT SINK 13213E0042 (97403)	A	EA	1	*	*	*	*	*	*	5	5	2	26
F	5310-941-6019	NUT, SELF-LOCKING, HEXAGON: LEAD AND INSULATOR MTG, NO. 8-32 THD SIZE MS21083N08 (96906)	A	EA	6									2	27
F	5305-984-6191	SCREW, MACHINE: LEAD MTG, NO. 8-32 THD SIZE, 3/8 IN. LG MS35206-243 (96906)	A	EA	2									2	28
O	5310-925-9645	NUT, SELF-LOCKING, HEXAGON: METER MTG, NO. 4-40 THD SIZE MS21083N04 (96906)	A	EA	6									2	29
F	5310-925-9645	NUT, SELF-LOCKING, HEXAGON: LEAD TO RECTIFIER, NO. 4-40 THD SIZE MS21083N04 (96906)	A	EA	14									REF	REF
F	5305-889-3116	SCREW, MACHINE: LEAD TO RECTIFIER, NO. 4-40 THD SIZE, 1/4 IN. LG MS35206-213 (96906)	A	EA	14									2	30
F	5310-768-0319	NUT, PLAIN, HEXAGON: RECTIFIER MTG, 1/4-28 THD SIZE MS51968-2 (96906)	A	EA	14									2	31
F	5310-550-1130	WASHER, LOCK: RECTIFIER MTG, 1/4 IN. SCREW SIZE MS35333-40 (96906)	A	EA	14									2	32
P F	5961-00-752-5701	RECTIFIER 1N1188 (04713)	A	EA	7	2	2	3	2	2	3	35	10	2	33
P F	5961-938-2843	HEAT SINK: LH 13213E0107 (97403)	A	EA	1	*	*	*	*	*	*	5	5	2	34
P F	5961-00-950-6565	RECTIFIER 1N1188R (81349)	A	EA	7	2	2	3	2	2	3	35	10	2	35
P F	5961-938-2842	HEAT SINK: RH 13213E0105 (97403)	A	EA	1	*	*	*	*	*	*	5	5	2	36
P F	6110-023-5050	REGULATOR, VOLTAGE: DC 13213E0140 (97403)	A	EA	1	*	2	2	*	2	2	30	30	2	37
P F	5910-835-1941	CAPACITOR, FIXED: RADIO SUPPRESSION CP12A1KF104K3 (81349)	A	EA	1	2	2	3	2	2	3	20	20	2	38
X2F		TUBE, VENT 13213E0136 (97403)	A	EA	2									2	39
X2F		GROMMET, RUBBER: CONTROL BOX LEADS MS35489-16 (96906)	A	EA	1									2	40
O	5305-889-2999	SCREW, MACHINE: METER MTG, NO. 4-40 THD SIZE, 1/2 IN. LG MS35206-217 (96906)	A	EA	6									2	41
P O	6625-068-0562	METER, INDICATOR, CURRENT 13208E8534 (97403)	A	EA	1	*	*	*	*	*	*	5	5	2	42

(1) SMR CODE	(2) FEDERAL STOCK NUMBER	(3) DESCRIPTION REF NUMBER & MFR CODE	(4) USABLE ON CODE	(5) UNIT OF MEAS UNIT	(6) 30-DAY DS MAINT ALLOWANCE			(7) 30-DAY GS MAINT ALLOWANCE			(8) 1-YR ALW PER 100 EQUIP CNTGY	(9) DEPOT MAINT ALW PER 100 EQUIP	(10) ILLUS- TRATION (A) (B)		
					(A)	(B)	(C)	(A)	(B)	(C)			FIG. NO.	ITEM NO.	
P O	6625-078-6377	VOLT METER: DC 13208E8535 (97403)	A	EA	1	*	*	*	*	*	*	5	5	2	43
P O	5355-959-3161	KNOB, CONTROL: RHEOSTAT MS91528-0K1B (96906)	A	EA	1	*	*	*	*	*	*	5	5	2	44
O	5305-717-6949	SETSCREW: KNOB MTG, NO. 4-40 THD SIZE, 3/16 IN. LG MS51963-10 (96906)	A	EA	2									2	45
P O	5905-764-4885	RHEOSTAT ASSEMBLY: VOLTAGE CONTROL RP0618B501KK (81349)	A	EA	1	*	2	2	*	2	2	20	20	2	46
P O	5925-938-2840	CIRCUIT BREAKER 13213E0137 (97403)	A	EA	1	*	*	2	*	*	*	10	5	2	47
F	5310-902-6676	NUT, SELF-LOCKING, HEXAGON: SHUNT MTG, NO. 10-32 THD SIZE MS21083N3 (96906)	A	EA	2									2	48
F	5305-989-7435	SCREW, MACHINE: SHUNT MTG, NO. 10-32 THD SIZE, 5/8 IN. LG MS35207-264 (96906)	A	EA	2									2	49
X2F		SHUNT, METER 20M223 (99246)	A	EA	1									2	50
F	5305-984-6194	SCREW, MACHINE: INSULATOR MTG, NO. 8-32 THD SIZE, 5/8 IN. LG MS35206-246 (96906)	A	EA	4									2	51
F	5310-682-5491	NUT, PLAIN, HEXAGON: LOAD TERMINAL MTG, 1/4-20 THD SIZE	A	EA	4									2	52
P F	5940-958-0349	TERMINAL, LOAD 13208E5820-2 (97403)	A	EA	2	*	*	2	*	*	2	10	10	2	53
X2F		INSULATOR, LOAD TERMINAL 13213E0064 (97403)	A	EA	1									2	54
P F	5340-454-7527	MOUNT, RESILIENT: CONTROL BOX 13213E0037-2 (97403)	A	EA	2	*	2	2	*	2	2	16	16	2	55
F	5310-433-0738	WASHER, SNUBBING: RESILIENT MOUNT J2049-1D (76005)	A	EA	2									2	56
F	5320-208-9632	RIVET, SOLID: RECEPTACLE MTG, 1/8 IN. DIA, 7/16 IN. LG MS20427-4C7 (96906)	A	EA	2									2	57
X2F		RECEPTACLE: CONTROL BOX COVER STUD 13213E5164 (97403)	A	EA	1									2	58
X2F		INSERT, THREADED: CONTROL PANEL MTG, NO. 10-32 THD SIZE 13213E0019 (97403)	A	EA	9									2	59
X1		PANEL, FRONT 13213E0134 (97403)	A	EA	1									2	60
X2F		LEAD, ELECTRICAL: RECTIFIER TO TERMINAL BOARD, X1B14 13213E0108-2 (97403)	A	EA	1										
X2F		LEAD, ELECTRICAL: RECTIFIER TO RECTIFIER, X1C14 13213E0108-3 (97403)	A	EA	1										
X2F		LEAD, ELECTRICAL: RECTIFIER TO VOLTAGE REGULATOR, V12B16 13213E0108-4 (97403)	A	EA	1										
X2F		LEAD, ELECTRICAL: VOLTAGE REGULATOR TO TERMINAL BOARD, X1D16 13213E0108-6 (97403)	A	EA	1										

(1)	(2)	(3)	(4)	(5)	(6)			(7)			(8)	(9)	(10)			
					30-DAY DS MAINT ALLOWANCE			30-DAY GS MAINT ALLOWANCE			1-YR	DEPOT	ILLUS-			
SMR	FEDERAL	DESCRIPTION	USABLE	UNIT	QTY	(A)	(B)	(C)	(A)	(B)	(C)	ALW	MAINT	(A)	(B)	
CODE	STOCK	REF NUMBER & MFR CODE	ON	OF	INC							PER	ALW	PER	FIG.	ITEM
	NUMBER		CODE	MEAS	UNIT	1-20	21-50	51-100	1-20	21-50	51-100	EQUIP	100	100	NO.	NO.
X2F		LEAD, ELECTRICAL: RECTIFIER TO TERMINAL BOARD, X2B14 13213E0108-7 (97403)	A	EA	1											
X2F		LEAD, ELECTRICAL: RECTIFIER TO RECTIFIER, X2C14 13213E0108-9 (97403)	A	EA	1											
X2F		LEAD, ELECTRICAL: RECTIFIER TO TERMINAL BOARD, X3B14 13213E0108-10 (97403)	A	EA	1											
X2F		LEAD, ELECTRICAL: RECTIFIER TO RECTIFIER, X3C14 13213E0108-12 (97403)	A	EA	1											
X2F		LEAD, ELECTRICAL: RECTIFIER TO TERMINAL BOARD, X4B14 13213E0108-13 (97403)	A	EA	1											
X2F		LEAD, ELECTRICAL: VOLTAGE REGULATOR TO TERMINAL BOARD, V10B16 13213E0108-14 (97403)	A	EA	1											
X2F		LEAD, ELECTRICAL: RECTIFIER TO RECTIFIER, X4C14 13213E0108-16 (97403)	A	EA	1											
X2F		LEAD, ELECTRICAL: VOLTAGE REGULATOR TO TERMINAL BOARD, X4D16 13213E0108-17 (97403)	A	EA	1											
X2F		LEAD, ELECTRICAL: RECTIFIER TO TERMINAL BOARD, X5B14 13213E0108-19 (97403)	A	EA	1											
X2F		LEAD, ELECTRICAL: RECTIFIER TO RECTIFIER, X5C14 13213E0108-20 (97403)	A	EA	1											
X2F		LEAD, ELECTRICAL: RECTIFIER TO TERMINAL BOARD, X6B14 13213E0108-22 (97403)	A	EA	1											
X2F		LEAD, ELECTRICAL: RECTIFIER TO RECTIFIER, X6C14 13213E0108-23 (97403)	A	EA	1											
X2F		LEAD, ELECTRICAL: AMMETER TO SHUNT, D14A16 13213E0108-25 (97403)	A	EA	1											
X2F		LEAD, ELECTRICAL: RECTIFIER TO TERMINAL BOARD, V9B14 13213E0108-27 (97403)	A	EA	1											
X2F		LEAD, ELECTRICAL: RECTIFIER TO LOAD TERMINAL, V12A14 13213E0108-29 (97403)	A	EA	1											
X2F		LEAD, ELECTRICAL: VOLTAGE REGULATOR TO TERMINAL BOARD, V11B16 13213E0108-31 (97403)	A	EA	1											
X2F		LEAD, ELECTRICAL: RECTIFIER TO TERMINAL BOARD, X7B14 13213E0108-32 (97403)	A	EA	1											
X2F		LEAD, ELECTRICAL: RECTIFIER TO RECTIFIER, X7C14 13213E0108-33 (97403)	A	EA	1											
X2F		LEAD, ELECTRICAL: SHUNT TO TERMINAL BOARD, V8B14 13213E0108-34 (97403)	A	EA	1											
X2F		LEAD, ELECTRICAL: RECTIFIER TO VOLT METER, V12C16 13213E0108-35 (97403)	A	EA	1											

(1)	(2)	(3)	(4)	(5)	(6)	(7)	(8)	(9)	(10)							
SMR CODE	FEDERAL STOCK NUMBER	DESCRIPTION REF NUMBER & MFR CODE	USABLE ON CODE	UNIT OF MEAS	QTY INC UNIT	30-DAY DS MAINT ALLOWANCE			30-DAY GS MAINT ALLOWANCE			1-YR	DEPOT	ILLUS- TRATION		
						(A)	(B)	(C)	(A)	(B)	(C)	ALW	MAINT	(A)	(B)	
						PER	PER	PER	PER	PER	PER	PER	ALW	PER	FIG.	ITEM
						1-20	21-50	51-100	1-20	21-50	51-100	EQUIP	EQUIP	NO.	NO.	
X2F		HINGE, COVER 13213E0013 (97403)	BC	EA	1										3	6
F	5305-727-5751	SCREW, ASSEMBLED WASHER: CONTROL BOX, NO. 10-32 THD SIZE, 3/8 IN. LG 441375 (00000)	BC	EA	9										3	7
X2F		WRAPPER, PANEL 13213E0034 (97403)	BC	EA	A										3	8
X20		PLATE, WIRING, DIAGRAM 13213E0181 (97403)	B	EA	1										3	9
X20		PLATE, WIRING, DIAGRAM 13213E0068 (97403)	C	EA	1										3	9
X20		PLATE, OPERATING INSTRUCTION 13213E0067 (97403)	BC	EA	1										3	10
X2F		RETAINER, STUD 13213E5162 (97403)	BC	EA	1										3	11
X2F		STUD, FASTENER: COVER 13213E5163-3 (97403)	BC	EA	1										3	12
X2F		COVER, PANEL 13213E0138 (97403)	BC	EA	1										3	13
O	5310-905-8451	NUT, SELF-LOCKING, HEXAGON: RECEPTACLE MTG, NO. 6-32 THD SIZE MS21083N06 (96906)	C	EA	2										3	14
F	5310-905-8451	NUT, SELF-LOCKING, HEXAGON: REGULATOR, TERMINAL BOARD, HEAT SINK AND SUPPORT MTG, NO. 6-32 THD SIZE MS21083N06 (96906)	BC	EA	14										REF	REF
O	5305-889-3000	SCREW, MACHINE: RECEPTACLE MTG, NO. 6-32 THD SIZE, 1/2 IN. LG MS35206-230 (96906)	C	EA	2										3	15
F	5305-889-3000	SCREW, MACHINE: HEAT SINK AND SUPPORT MTG, NO. 6-32 THD SIZE, 1/2 IN. LG MS35206-230 (96906)	BC	EA	6										REF	REF
F	5305-984-4992	SCREW, MACHINE: TERMINAL BOARD MTG, NO. 6-32 THD SIZE, 3/4 IN. LG MS35206-232 (96906)	BC	EA	2										3	16
X2F		TERMINAL BOARD TYPE37TB8 (97403)	BC	EA	1										3	17
O	5310-925-9645	NUT, PLAIN, HEXAGON: METER MTG, NO. 4-40 THD SIZE MS21083N04 (96906)	BC	EA	6										3	18
F	5310-925-9645	NUT, SELF-LOCKING, HEXAGON: RECTIFIER LEAD, NO. 4-40 THD SIZE MS21083N04 (96906)	BC	EA	4										REF	REF
F	5305-889-3116	SCREW, MACHINE: RECTIFIER LEAD, NO. 4-40 THD SIZE, 1/4 IN. LG MS35206-23 (96906)	BC	EA	4										3	19
F	5310-768-0319	NUT, PLAIN, HEXAGON: RECTIFIER MTG, 1-4-28 THD SIZE MS51968-2 (96906)	BC	EA	4										3	20
P F	5961-00-950-6565	RECTIFIER 1N1188R (81349)	BC	EA	2	2	2	3	2	2	3	30	30	3	21	
P F	5961-00-752-5701	RECTIFIER 1N1188 (04713)	BC	EA	2	2	2	3	2	2	3	30	30	3	22	
P F	5999-056-7805	HEAT SINK 13213E0044 (97403)	BC	EA	2	*	*	*	*	*	*	5	5	3	23	

(1) SMR CODE	(2) FEDERAL STOCK NUMBER	(3) DESCRIPTION REF NUMBER & MFR CODE	(4) USABLE ON CODE	(5) UNIT OF MEAS	(6) QTY INC IN UNIT	(7) 30-DAY DS MAINT ALLOWANCE			(8) 30-DAY GS MAINT ALLOWANCE			(9) 1-YR ALW PER 100 EQUIP CNTGY	(10) DEPOT MAINT ALW PER 100 EQUIP	(11) ILLUS- TRATION		
						(A)	(B)	(C)	(A)	(B)	(C)			(A)	(B)	
P F	6115-223-2504	SUPPORT, HEAT SINK 13213E0042 (97403)	BC	EA	1	REF	REF	REF	REF	REF	REF	REF	REF	REF	3	24
P F	6110-936-5024	REGULATOR ASSEMBLY, VOLTAGE 13213E0184 (97403)	B	EA	1	*	2	2	*	2	2	20	20	3	25	
P F	6110-252-2113	REGULATOR ASSEMBLY, VOLTAGE 13213E0103 (97403)	C	EA	1	*	2	2	*	2	2	20	20	3	25	
F	5310-902-6676	NUT, SELF-LOCKING, HEXAGON; SWITCH BRACKET MTG, NO. 10-32 THD SIZE MS21083N3 (96906)	BC	EA	2									3	26	
F	5305-531-0341	SCREW, ASSEMBLED WASHER: SWITCH BRACKET MTG, NO. 10-32 THD SIZE, 1/2 IN. LG	BC	EA	2									3	27	
P O	5930-557-5175	SWITCH, TOGGLE: VOLTAGE MS25126E3 (96906)	BC	EA	1	*	2	2	*	2	2	18	10	3	28	
X2F		BRACKET, SWITCH 13213E0038 (97403)	BC	EA	1									3	29	
O	5305-889-2999	SCREW, MACHINE: METER MTG, NO. 4-40 THD SIZE, 1/2 IN. LG MS35206-217 (96906)	BC	EA	3									3	30	
P O	6625-079-7443	METER, VOLTAGE, AC 13208E8524 (97403)	BC	EA	1	*	*	*	*	*	*	5	5	3	31	
P O	5930-615-7897	SWITCH, TOGGLE: LOAD MS35059-31 (96906)	B	EA	1	*	2	2	*	2	2	20	20	3	32	
P O	5930-655-1575	SWITCH, TOGGLE: LOAD MS35059-22 (96906)	C	EA	1	*	2	2	*	2	2	20	20	3	32	
P O	5355-959-3161	KNOB, CONTROL: RHEOSTAT MS91528-OKIB (96906)	BC	EA	1	*	*	*	*	*	*	5	5	3	33	
O	5305-717-6494	SETSCREW: CONTROL KNOB, NO. 4-40 THD SIZE, 3/16 IN. LG MS51963-10 (96906)	BC	EA	2									3	34	
P O	5905-688-4186	RHEOSTAT: VOLTAGE CONTROL 13213E0099-1 (97403)	BC	EA	1	*	2	2	*	2	20	20		3	35	
P O	5935-860-7319	RECEPTACLE, DUPLEX, FLUSH	C	EA	1	2	2	3	2	2	3	30	20	3	36	
F	5320-584-9078	RIVET, SOLID: CAPACITOR MTG, 1/8 IN. DIA, 1/4 IN. LG MS20470A4-4 (96906)	BC	EA	1									3	37	
P F	5910-835-1941	CAPACITOR: RADIO SUPPRESSION CP12A1K104K3 (44655)	BC	EA	1	2	2	2	2	2	3	30	20	3	38	
F	5310-941-6019	NUT, SELF-LOCKING, HEXAGON; INSULATOR MTG, NO. 8-32 THD SIZE MS21083N08 (96906)	B	EA	4									3	38	
F	5305-984-6194	SCREW, MACHINE: INSULATOR MTG, NO. 8-32 THD SIZE, 5/8 IN. LG MS35206-246 (96906)	BC	EA	4									3	39	
F	5310-682-5491	NUT, PLAIN, HEXAGON: LOAD TERMINAL, 1/4-20 THD SIZE MS35620-412 (96906)	BC	EA	4									3	40	
F	5310-209-0760	WASHER, LOCK: LOAD TERMINAL, 1/4 IN. SCREW SIZE MS35335-75 (96906)	BC	EA	5									3	41	
P F	5940-958-0349	TERMINAL: LOAD 13208E5820-2 (97403)	BC	EA	2	REF	REF	REF	REF	REF	REF	REF	REF	3	42	
X2F		INSULATOR, TERMINAL 13213E0064 (97403)	BC	EA	1									3	43	

(1)	(2)	(3)	(4)	(5)	(6)	(7)	(8)	(9)	(10)						
SMR CODE	FEDERAL STOCK NUMBER	DESCRIPTION REF NUMBER & MFR CODE	USABLE ON CODE	UNIT OF MEAS	QTY INC IN UNIT	30-DAY DS MAINT ALLOWANCE			30-DAY GS MAINT ALLOWANCE			1-YR	DEPOT	ILLUS-	
						(A)	(B)	(C)	(A)	(B)	(C)	ALW	MAINT	TRATION	
						1-20	21-50	51-100	1-20	21-50	51-100	PER 100 EQUIP CNTGY	ALW 100 PER EQUIP	FIG.	ITEM
														NO.	NO.
X2F		TUBE, VENT: CONTROL BOX 13213E0136 (97403)	BC	EA	2									3	44
X2F		GROMMET, RUBBER: CONTROL BOX MS35489-16 (96906)	BC	EA	1									3	45
P F	5340-454-7527	MOUNT, RESILENT: CONTROL PANEL 13213E0037-2 (97403)	BC	EA	2	REF	REF	REF	REF	REF	REF	REF	REF	3	46
F	5310-433-0738	WASHER, SNUBBLING: MOUNT J2049-1D (76005)	BC	EA	2									3	47
F	5320-208-9632	RIVET, SOLID: COVER RECEPTACLE MTG, 1/8 IN. DIA, 7/16 IN. LG MS20427-4C7 (96906)	BC	EA	2									3	48
X2F		RECEPTACLE, FASTENER: COVER 13213E5164 (97403)	BC	EA	1									3	49
X2F		INSERT, THREADED: CONTROL PANEL NO. 10-32 THD SIZE 13213E0019 (97403)	BC	EA	9									3	50
X1		PANEL, FRONT 13213E0159 (97403)	B	EA	1									3	51
X1		PANEL, FRONT 13213E0035 (97403)	C	EA	1									3	51
X2F		LEAD, ELECTRICAL: TERMINAL BOARD TO RECTIFIER, X1B16 13213E0183-2 (97403)	B	EA	1										
X2F		LEAD, ELECTRICAL: TERMINAL BOARD TO VOLTAGE SELECTOR SWITCH, X1B16 13213E183-3 (97403)	B	EA	1										
X2F		LEAD, ELECTRICAL: LOAD SWITCH TO RECTIFIER, X1B16 13213E0183-4 (97403)	B	EA	1										
X2F		LEAD, ELECTRICAL: LOAD SWITCH TO VOLT METER, X1G16 13213E0183-5 (97403)	B	EA	1										
X2F		LEAD, ELECTRICAL: TERMINAL BOARD TO VOLTAGE SELECTOR SWITCH, X2B16 13212E0183-7 (97403)	B	EA	1										
X2F		LEAD, ELECTRICAL: TERMINAL BOARD TO VOLTAGE REGULATOR, X2C16 13213E0183-8 (97403)	B	EA	1										
X2F		LEAD, ELECTRICAL: TERMINAL BOARD TO VOLTAGE SELECTOR SWITCH, X3B16 13213E0183-10 (97403)	B	EA	1										
X2F		LEAD, ELECTRICAL: TERMINAL BOARD TO VOLTAGE SELECTOR SWITCH, X4B16 13213E0183-12 (97403)	B	EA	1										
X2F		LEAD, ELECTRICAL: TERMINAL BOARD TO LOAD SWITCH, X4C16 13213E0183-13 (97403)	B	EA	1										
X2F		LEAD, ELECTRICAL: LOAD SWITCH TO VOLT METER, X4E16 13213E0183-14 (97403)	B	EA	1										
X2F		LEAD, ELECTRICAL: VOLT METER TO VOLTAGE REGULATOR, X1D16 13213E0183-15 (97403)	B	EA	1										
X2F		LEAD, ELECTRICAL: LOAD SWITCH TO LOAD TERMINAL, X7A16 13213E0183-16 (97403)	B	EA	1										

(1)	(2)	(3)	(4)	(5)	(6)	(7)	(8)	(9)	(10)									
SMR CODE	FEDERAL STOCK NUMBER	DESCRIPTION REF NUMBER & MFR CODE	USABLE ON CODE	UNIT OF MEAS	QTY INC UNIT	30-DAY DS MAINT ALLOWANCE			30-DAY GS MAINT ALLOWANCE			1-YR	DEPOT	ILLUS-				
						(A)	(B)	(C)	(A)	(B)	(C)	ALW	MAINT	TRATION				
						1-20	21-50	51-100	1-20	21-50	51-100	PER EQUIP	ALW EQUIP	100 EQUIP	(A)	(B)	FIG. ITEM NO. NO.	
X2F		LEAD, ELECTRICAL: LOAD SWITCH TO LOAD TERMINAL, X8A16 13213E0183-17 (97403)	B	EA	1													
X2F		LEAD, ELECTRICAL: TERMINAL BOARD TO RECTIFIER, V9B16 13213E0183-18 (97403)	B	EA	1													
X2F		LEAD, ELECTRICAL: TERMINAL BOARD TO RECTIFIER, V10B16 13213E0183-19 (97403)	B	EA	1													
X2F		LEAD, ELECTRICAL: TERMINAL BOARD TO VOLTAGE REGULATOR, V11B16 13213E0183-20 (97403)	B	EA	1													
X2F		LEAD, ELECTRICAL: TERMINAL BOARD TO VOLTAGE REGULATOR, V12B16 13213E0183-21 (97403)	B	EA	1													
X2F		LEAD, ELECTRICAL: RHEOSTAT TO VOLTAGE REGULATOR, V14A16 13213E0183-22 (97403)	B	EA	1													
X2F		LEAD, ELECTRICAL: RHEOSTAT TO VOLTAGE REGULATOR, V15A16 13213E0183-23 (97403)	B	EA	1													
X2F		LEAD, ELECTRICAL: RHEOSTAT TO VOLTAGE REGULATOR, V16A16 13213E0183-24 (97403)	B	EA	1													
X2F		JUMPER, WIRE 13213E0183-25 (97403)	B	EA	1													
X2F		JUMPER, WIRE 13213E0183-30 (97403)	B	EA	2													
X2F		LEAD, ELECTRICAL: LOAD SWITCH TO TERMINAL BOARD 13213E0183-31 (97403)	B	EA	1													
X2F		LEAD, ELECTRICAL: FIELD BRIDGE TO TERMINAL STRIP, X1B16 13213E0008-2 (97403)	C	EA	1													
X2F		LEAD, ELECTRICAL: VOLTAGE SELECTOR SWITCH TO TERMINAL STRIP, X1C16 13213E0008-3 (97403)	C	EA	1													
X2F		LEAD, ELECTRICAL: VOLTAGE REGULATOR TO TERMINAL STRIP, X1D16 13213E0008-4 (97403)	C	EA	1													
X2F		LEAD, ELECTRICAL: FIELD BRIDGE TO LOAD SWITCH, X1E16 13213E0008-5 (97403)	C	EA	1													
X2F		LEAD, ELECTRICAL: VOLTAGE SELECTOR SWITCH TO TERMINAL STRIP, X2B16 13213E0008-8 (97403)	C	EA	1													
X2F		LEAD, ELECTRICAL: VOLTAGE REGULATOR TO TERMINAL STRIP, X2C16 13213E0008-9 (97403)	C	EA	1													
X2F		LEAD, ELECTRICAL: VOLTAGE SELECTOR SWITCH TO 120V RECEPTACLE, X2D16 13213E0008-10 (97403)	C	EA	1													
X2F		LEAD, ELECTRICAL: VOLTAGE SELECTOR SWITCH TO TERMINAL STRIP, X3B16 13213E0008-12 (97403)	C	EA	1													
X2F		LEAD, ELECTRICAL: VOLTAGE SELECTOR SWITCH TO TERMINAL STRIP, X4B16 13213E0008-14 (97403)	C	EA	1													

(1)	(2)	(3)	(4)	(5)	(6)	(7)	(8)	(9)	(10)						
SMR CODE	FEDERAL STOCK NUMBER	DESCRIPTION REF NUMBER & MFR CODE	USABLE ON CODE	UNIT OF MEAS	QTY INC IN UNIT	30-DAY DS MAINT ALLOWANCE			30-DAY GS MAINT ALLOWANCE			1-YR	DEPOT	ILLUS-	
						(A)	(B)	(C)	(A)	(B)	(C)	ALW	MAINT	TRATION	
						1-20	21-50	51-100	1-20	21-50	51-100	EQUIP CNTGY	100 EQUIP	100 EQUIP	FIG. ITEM NO. NO.
X2F		LEAD, ELECTRICAL: LOAD SWITCH TO TERMINAL STRIP, X4C16 13213E0008-15 (97403)	C	EA	1										
X2F		LEAD, ELECTRICAL: LOAD SWITCH TO VOLT METER, X1G16 13213E0008-17 (97403)	C	EA	1										
X2F		LEAD, ELECTRICAL: LOAD SWITCH TO VOLT METER, X4E16 13213E0008-18 (97403)	C	EA	1										
X2F		LEAD, ELECTRICAL: LOAD SWITCH TO LOAD TERMINAL 2, X7A16 13213E0008-19 (97403)	C	EA	1										
X2F		LEAD, ELECTRICAL: LOAD SWITCH TO LOAD TERMINAL 1, X8A16 13213E0008-20 (97403)	C	EA	1										
X2F		LEAD, ELECTRICAL: FIELD BRIDGE TO TERMINAL STRIP, V9B16 13213E0008-22 (97403)	C	EA	1										
X2F		LEAD, ELECTRICAL: FIELD BRIDGE TO TERMINAL STRIP, V10B16 13213E0008-24 (97403)	C	EA	1										
X2F		LEAD, ELECTRICAL: VOLTAGE REGULATOR TO TERMINAL STRIP, V11B16 13213E0008-26 (97403)	C	EA	1										
X2F		LEAD, ELECTRICAL: VOLTAGE REGULATOR TO TERMINAL STRIP, V12B16 13213E0008-28 (97403)	C	EA	1										
X2F		LEAD, ELECTRICAL: VOLTAGE REGULATOR TO RHEOSTAT, V14A16 13213E0008-30 (97403)	C	EA	1										
X2F		LEAD, ELECTRICAL: VOLTAGE REGULATOR TO RHEOSTAT, V15A16 13213E0008-31 (97403)	C	EA	1										
X2F		LEAD, ELECTRICAL: VOLTAGE REGULATOR TO RHEOSTAT, V16A16 13213E0008-32 (97403)	C	EA	1										
X2F		JUMPER, ELECTRICAL: VOLTAGE SELECTOR SWITCH 13213E0008-34 (97403)	C	EA	1										
X2F		LEAD, ELECTRICAL: VOLT METER TO RECEPTACLE, X19A16 13213E0008-35 (97403)	C	EA	1										
X2F		TERMINAL, LUG MS25036-54 (96906)	C	EA	7										
X2F		TERMINAL, LUG MS25036-6 (96906)	C	EA	29										
X2F		TERMINAL, LUG MS25036-53 (96906)	C	EA	2										
		GROUP 03 - FUEL SYSTEM													
P O	2910-472-5526	LINE ASSEMBLY, FUEL FP16715-1 (10100) (USED WITH METAL TANK ONLY)		EA	1	2	2	3	2	2	3	30	20	4	1
X20		CAP, PLUG: SELECTOR VALVE ELBOW, 1/2-20 THD SIZE		EA	1									4	2
X20		ELBOW, PIPE TO TUBE: SELECTOR VALVE ONE END MALE, 5/16 IN. TUBE, OTHER END FEMALE, 1/8-27 PIPE THREAD MS39161-4 (96906)		EA	1									4	3

(1) SMR CODE	(2) FEDERAL STOCK NUMBER	(3) DESCRIPTION REF NUMBER & MFR CODE	(4) USABLE ON CODE	(5) UNIT OF MEAS	(6) QTY INC IN UNIT	30-DAY DS MAINT ALLOWANCE			30-DAY GS MAINT ALLOWANCE			(8) 1-YR PER EQUIP CNTGY	(9) DEPOT MAINT ALW EQUIP	(10) ILLUS- TRATION (A) (B) FIG. ITEM NO. NO.	
						(A)	(B)	(C)	(A)	(B)	(C)	100	100	(A)	(B)
P O	2910-510-6673	STRAINER ASSEMBLY: FUEL 13214E8867 (97403)		EA	1	2	2	3	2	2	3	30	5	4	4
P O	4820-925-7374	VALVE, SELECTOR, FUEL 13208E5768 (97403)		EA	1	*	*	2	*	*	2	10	10	4	5
O	5310-807-1467	NUT, SELF-LOCKING, HEXAGON: STRAP MTG, NO. 10-32 THD SIZE MS21042-3 (96906) (USED WITH METAL TANK ONLY)		EA	2									4	6
O	5305-993-1851	SCREW,MACHINE: FUEL TANK STRAP, NO. 10-32 THD SIZE, 1 IN. LG MS35207-267 (96906) (USED WITH METAL TANK ONLY)		EA	2									4	7
X20		STRAP, FUEL TANK R3190-57 (92071) (USED WITH METAL TANK ONLY)		EA	2									4	8
X20		CUSHION: FUEL TANK STRAP R3190-65 (92071) (USED WITH METAL TANK ONLY)		EA	2									4	9
X20		CUSHION: FUEL TANK, BOTTOM R3190-66 (92071) (USED WITH METAL TANK ONLY)		EA	1									4	10
O	5310-088-1251	NUT, SELF-LOCKING, HEXAGON: FUEL TANK TO BRACKET, 1/4-20 THD SIZE MS51922-1 (96906) (USED WITH METAL TANK ONLY)		EA	1									4	11
P O	6150-057-6749	LEAD, ELECTRICAL: FUEL TANK GROUND 13208E5853-9 (97403) (USED WITH METAL TANK ONLY)		EA	1	*	*	*	*	*	*	5	10	4	12
O	5306-018-7979	BOLT, ASSEMBLED WASHER: BRACKET TO TANK AND GENERATOR, 1/4-20 THD SIZE, 1/2 IN. LG 187979 (00000) (USED WITH METAL TANK ONLY)		EA	3									4	13
O	5320-584-9078	RIVET, SOLID: WIRE ROPE TO FUEL TANK CAP, 1/8 IN. DIA, 1/4 IN. LG MS20470A4-4 (96906)		EA	1									4	14
X20		WIRE ROPE ASSEMBLY: FUEL TANK CAP, 10 1/8 IN. LG MS17351-8 (96906)		EA	1									4	15
X20		CAP, FUEL TANK (WHEN DEPLETED, FOR REPLACEMENT USE CAP ASSEMBLY, FSN 2910-904-2645, REF FIG 5 ITEM 5)		EA	1									4	16
P O	2910-065-6793	STRAINER, FUEL TANK 13208E5834 (97403)		EA	1	2	2	3	2	2	3	30	10	4	17
P O	2910-936-5016	TANK ASSEMBLY, FUEL 13213E0062 (97403) (WHEN DEPLETED REPLACE WITH FUEL TANK ASSEMBLY, P/N 13217E6400, (97403)		EA	1	*	*	2	*	*	2	10	5	4	18
X20		BRACKET, TANK, UPPER 13213E0060 (97403) (USED WITH METAL TANK ONLY)		EA	1									4	19
X20		BRACKET, TANK, LOWER 13213E0058 (97403) (USED WITH METAL TANK ONLY)		EA	1									4	20
P O	2910-936-5015	LINE ASSEMBLY, FUEL 13213E0056 (97403) (USED WITH NYLON FUEL TANK ONLY)		EA	1	2	2	3	2	2	3	30	20	5	1
O	5306-018-7979	BOLT, ASSEMBLED WASHER: FUEL TANK BRACKET MTG, 1/4-20 THD SIZE, 1/2 IN. LG 187979 (00000)	C	EA	2									5	2

(1) SMR CODE	(2) FEDERAL STOCK NUMBER	(3) DESCRIPTION REF NUMBER & MFR CODE	(4) USABLE ON CODE	(5) UNIT OF MEAS	(6) QTY INC IN UNIT	(6) 30-DAY DS MAINT ALLOWANCE			(7) 30-DAY GS MAINT ALLOWANCE			(8)	(9)	(10) ILLUS- TRATION	
						(A)	(B)	(C)	(A)	(B)	(C)	1-YR ALW PER EQUIP CNTGY	DEPOT MAINT ALW PER EQUIP	(A)	(B)
P F		FUEL TANK ASSEMBLY, NYLON 13217E6400 (97403) (WHEN REPLACING METAL TANK WITH NYLON TANK, BRACKETS, STRAPS AND FUEL HOSE MUST BE CHANGED ALSO)		EA	1	*	*	2	*	*	2	10	20	5	
O	5305-059-3663	SCREW, MACHINE: FUEL TANK STRAP MTG, NO. 10-32 THD SIZE, 1 IN. LG MS51958-67 (96906)		EA	4									5	3
X2O		STRAP, TANK 13217E6387-3 (97403)		EA	2									5	4
P O	2910-904-2645	CAP ASSEMBLY: FUEL TANK 13214E0115 (97403)		EA	1	2	2	3	2	2	3	30	30	5	5
X2O		HOOK, CAP, FUEL TANK CHAIN MS87006-2 (96906)		EA	2									5	6
M O		CHAIN: FUEL TANK CAP MANUFACTURING FROM: CHAIN, 1 FT REQUIRED, P/N MS17311-1 (96906)		EA	1									5	7
X2O		CAP, FUEL TANK 13213E4065 (97403)		EA	1									5	8
P O	2910-065-6793	STRAINER, FUEL TANK 13208E5834 (97403)	C	EA	1	REF	REF	REF	REF	REF	REF	REF	REF	5	9
P O		TANK, FUEL, NYLON 13217E5391 (97403)	C	EA	1	*	*	*	*	*	*	5	5	5	10
X2O		BRACKET, TANK, UPPER 13217E6399 (97403)	C	EA	1									5	11
X2O		NUT,PRESS: BRACKET, NO. 10-32 THD SIZE 1321E4854-4 (97403)		EA	2									5	12
X2O		BRACKET, TANK, LOWER 13217E6398 (97403)	C	EA	1									5	13
X2O		INSERT, THREADED: BRACKET, NO. 10-32 THD SIZE MS124655 (96906) GROUP 04 - GENERATOR		EA	2									5	14
P F R	6115-023-5029	GENERATOR ASSEMBLY 13213E0001-2 (97403)	A	EA	1	*	*	*	*	*	*	3	3	6	
P F R	6115-023-5040	GENERATOR ASSEMBLY 13213E0153 (97403)	B	EA	1	*	*	*	*	*	*	3	3	6	
P F R	6115-124-0574	GENERATOR ASSEMBLY: 0.5KW, 60 HERTZ 13213E0001-1 (97403)	C	EA	1	*	*	*	*	*	*	3	3	6	
F	5305-022-8322	SCREW, MACHINE: BEARING CAP MTG, NO. 8-32 THD SIZE, 3/8 IN. LG 228322 (00000)		EA	2									6	1
X2F		CAP, BEARING: GENERATOR 13213E0046 (97403)		EA	1									6	2
X2F		CAP, BEARING: GENERATOR 13213E0046 (97403)		EA	1									6	2
F	5306-051-4091	BOLT, MACHINE: MOTOR DRIVE, 5/16-24 THD SIZE, 4 1/2 IN. LG MS90727-49 (96906)		EA	1									6	3
F	5310-167-0721	WASHER, LOCK: MOTOR DRIVE, 5/16 IN. SCREW SIZE MS35333-41 (96906)		EA	1									6	4
F	5310-081-4219	WASHER, FLAT: MOTOR DRIVE, 5/16 IN. SCREW SIZE MS27183-12 (96906)		EA	1									6	5

(1)	(2)	(3)	(4)	(5)	(6)			(7)			(8)	(9)	(10)		
SMR	FEDERAL	DESCRIPTION		QTY	30-DAY DS MAINT			30-DAY GS MAINT			1-YR	DEPOT	ILLUS-		
CODE	STOCK		USABLE	INC	ALLOWANCE			ALLOWANCE			ALW	MAINT	TRATION		
	NUMBER		ON	IN	(A)	(B)	(C)	(A)	(B)	(C)	PER	ALW	(A)	(B)	
		REF NUMBER & MFR CODE	CODE	UNIT	1-20	21-50	51-100	1-20	21-50	51-100	EQUIP	PER	FIG.	ITEM	
				MEAS	UNIT						CNTGY	EQUIP	NO.	NO.	
F	5310-088-1251	NUT, SELF-LOCKING, HEXAGON: GENERATOR ADAPTER MTG, 1/4-20 THD SIZE MS51922-1 (96906)		EA	4								6	6	
F	5310-550-1130	WASHER, LOCK: GENERATOR ADAPTER MTG, 1/4 IN. SCREW SIZE MS35333-40 (96906)		EA	8								6	7	
F	5305-071-2242	SCREW, CAP, HEXAGON HEAD: GENERATOR ADAPTER AND GROUND STRAP MTG, 1/4-20 THD SIZE, 1 1/8 IN. LG MS90725-9 (96906)		EA	1								6	8	
F	5305-225-3839	SCREW, CAP, HEXAGON HEAD: GENERATOR ADAPTER MTG, 1/4-20 THD SIZE, 1 IN. LG MS90725-8 (96906)		EA	3								6	9	
X2F		ADAPTER, ENGINE: END BELL 13213E0033 (97403)		EA	1								6	10	
F	5310-012-0361	NUT, SELF-LOCKING, HEXAGON: STATOR ALIGNMENT SETSCREW, NO. 10-24 THD SIZE MS35649-102 (96906)		EA	6								6	11	
F	5310-043-2226	WASHER, LOCK: STATOR ALIGNMENT SETSCREW, NO. 10 SCREW SIZE MS35338-24 (96906)		EA	6								6	12	
F	5305-728-6266	SETSCREW: STATOR ALIGEMENT, NO. 10-24 THD SIZE, 5/8 IN. LG MS51973-43 (96906)		EA	6								6	13	
X2F		CLIP, BEARING: SHAFT 13213E0168 (97403)		EA	1								6	14	
P F	3110-052-1601	BEARING, BALL, ANNULAR: COMMUTATOR END 13213E0169 (97403)		EA	1	*	*	2	*	*	2	10	100	6	15
P F R	6115-023-5039	ROTOR ASSEMBLY 13213E0070 (97403)	AC	EA	1	*	*	*	*	*	3	3	6	16	
P B	6115-936-5021	ROTOR ASSEMBLY 13213E0170 (97403)	B	EA	1	*	*	*	*	*	3	3	6	16	
P F	6150-996-7352	FAN, COOLING 13213E0030 (97403)		EA	1	*	*	*	*	*	5	5	6	17	
X2F		SLEEVE, RUBBER: GENERATOR 13213E0182-1 (97403)		EA	1								6	18	
P F R	6115-443-4715	STATOR ASSEMBLY, GENERATOR 13217E6394 (97403)	A	EA	1	*	*	*	*	*	3	3	6	19	
P F R	6115-497-9973	STATOR ASSEMBLY, GENERATOR 13217E6395 (97403)	B	EA	1	*	*	*	*	*	3	3	6	19	
P F R	6115-221-8652	STATOR ASSEMBLY, GENERATOR 13217E6393 (97403)	C	EA	1	*	*	*	*	*	3	3	6	19	
X1		STATOR ASSEMBLY, EXCITER 13213E0073-2 (97403)	A	EA	1								6	20	
X1		STATOR ASSEMBLY, EXCITER 13213E0164 (97403)	B	EA	1								6	20	
X1		STATOR ASSEMBLY, EXCITER 13213E0073-1 (97403)	C	EA	1								6	20	
X1		STATOR ASSEMBLY, ALTERNATOR, FSN 6115-990-8772 13213E0109 (97403)	A	EA	1								6	21	
X1		STATOR ASSEMBLY, ALTERNATOR, FSN 6115-990-8771 13213E0160 (97403)	B	EA	1								6	21	
X1		STATOR ASSEMBLY, ALTERNATOR, 1321E0005 (97403)	C	EA	1								6	21	
X1		HOUSING, GENERATOR 13213E0032 (97403)	AC	EA	1								6	22	
X1		HOUSING, GENERATOR 13213E0172 (97403)	B	EA	1								6	22	

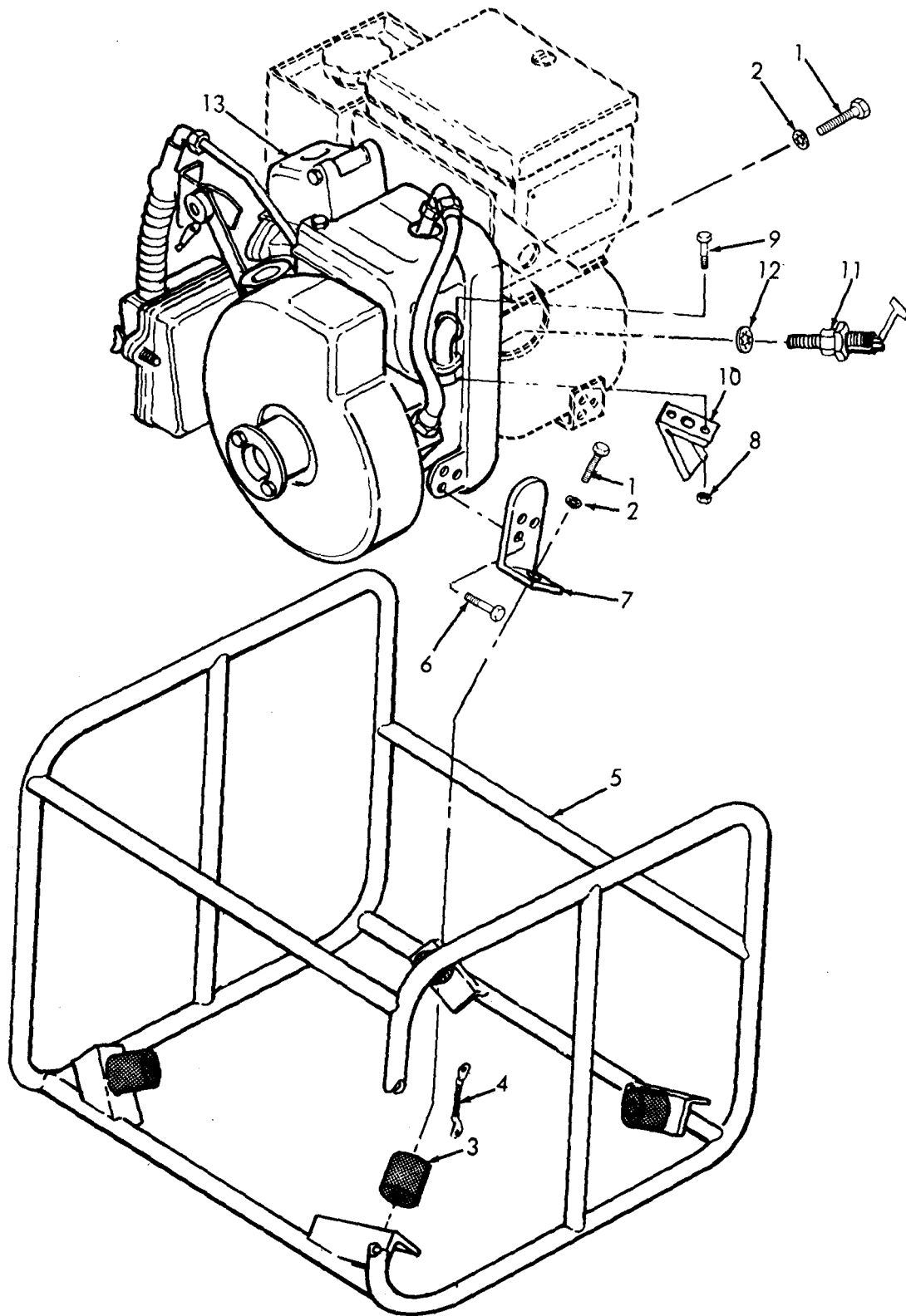


FIGURE NO. 1. ENGINE AND FRAME

ME 6115-329-25P/1

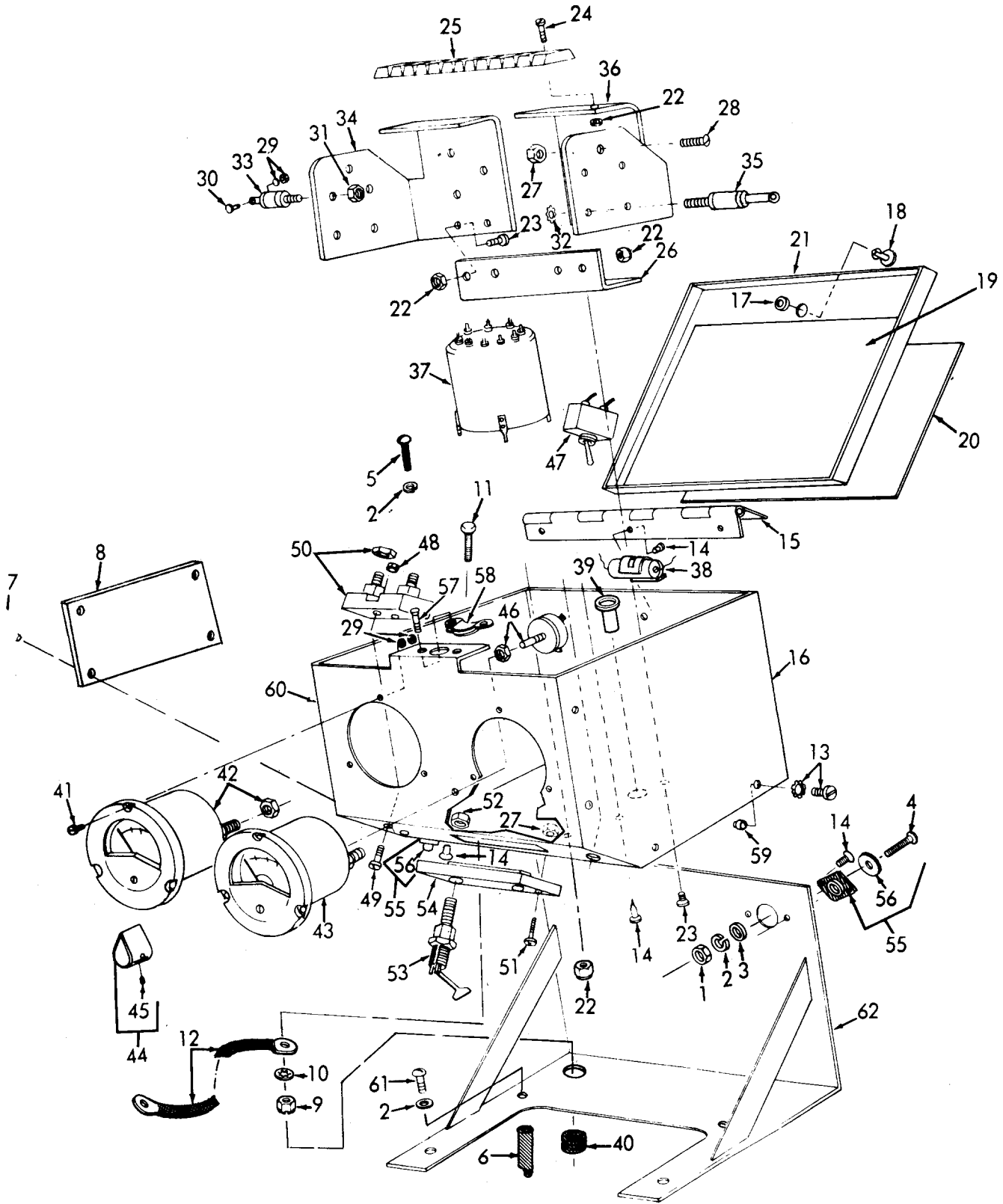
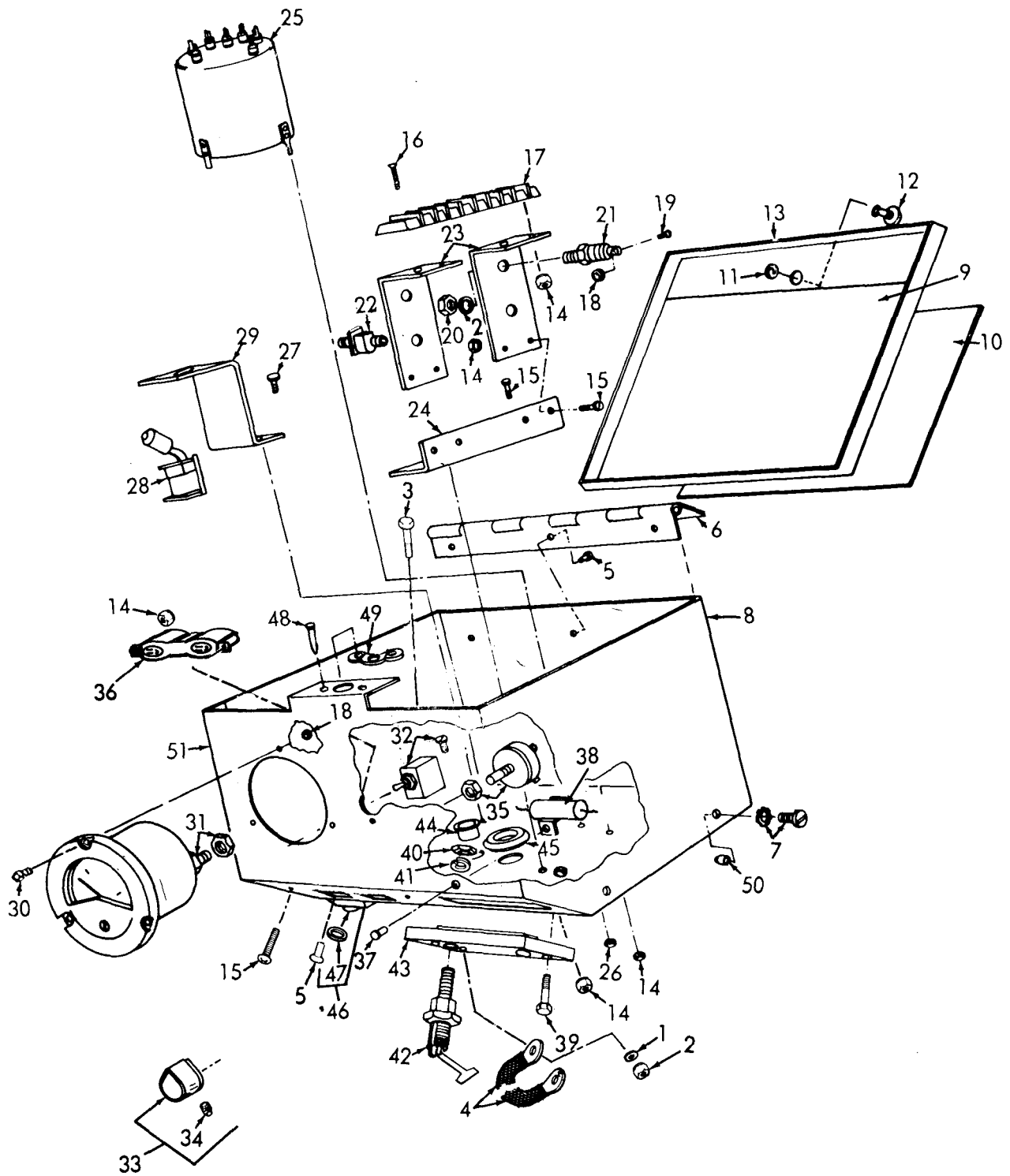


FIGURE NO. 2. CONTROL PANEL, DC

ME 6115-329-25P/2



FIGUR No. 3. CONTROL PANEL, AC

ME 6115-329-25P/3

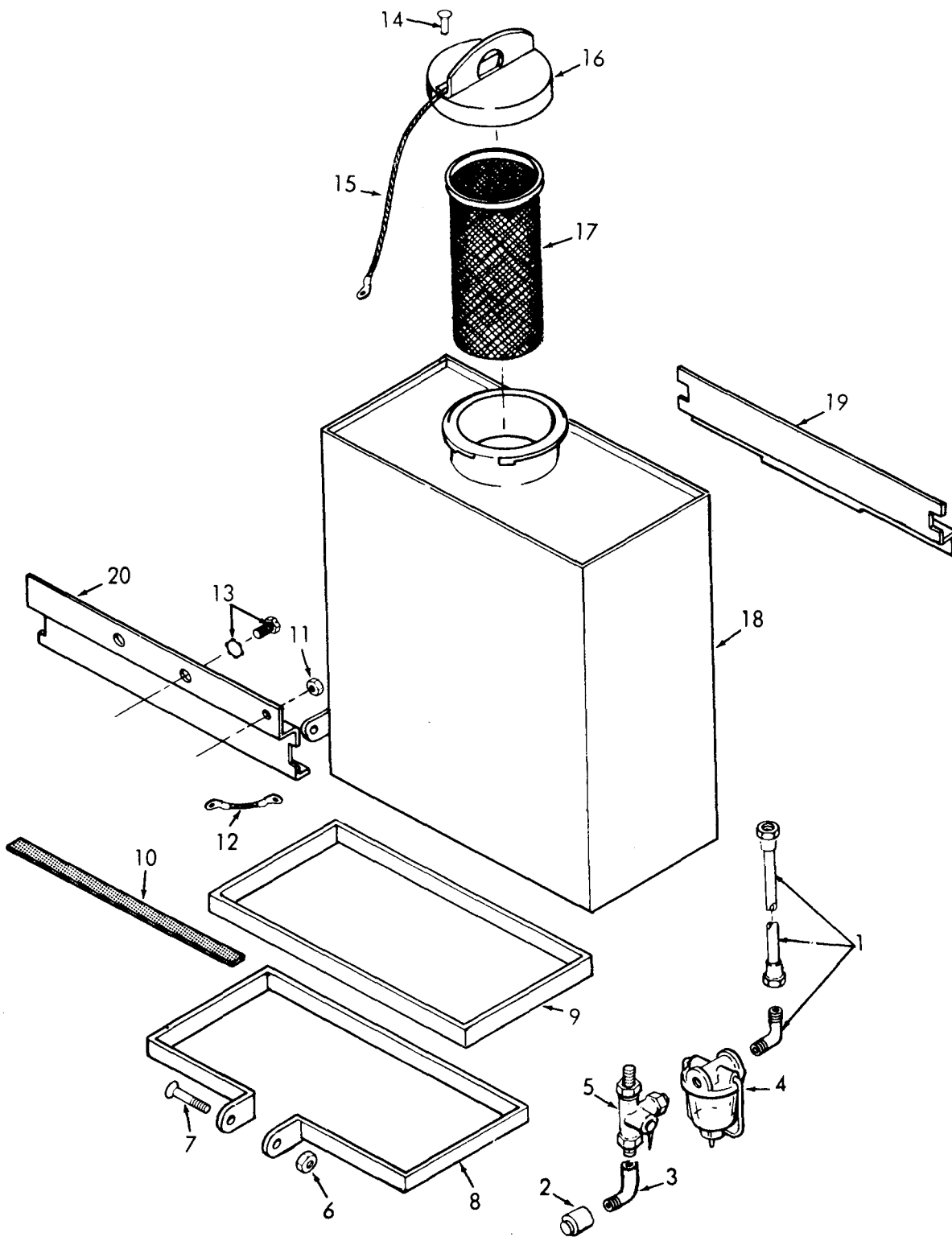


FIGURE NO. 4. FUEL TANK AND RELATED PARTS,
METAL TANK

ME 6115-329-25P/4

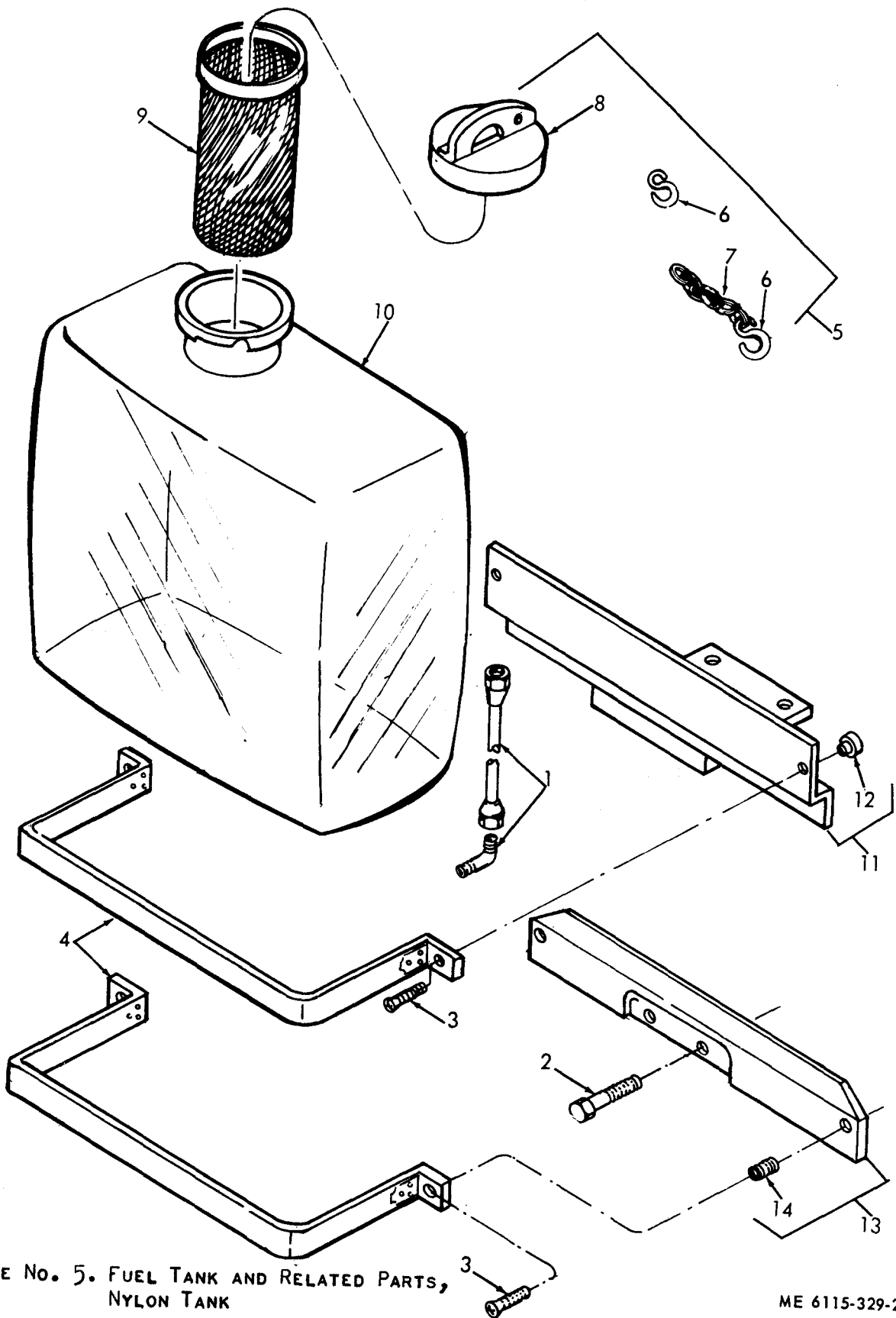


FIGURE NO. 5. FUEL TANK AND RELATED PARTS,
 NYLON TANK

ME 6115-329-25P/5

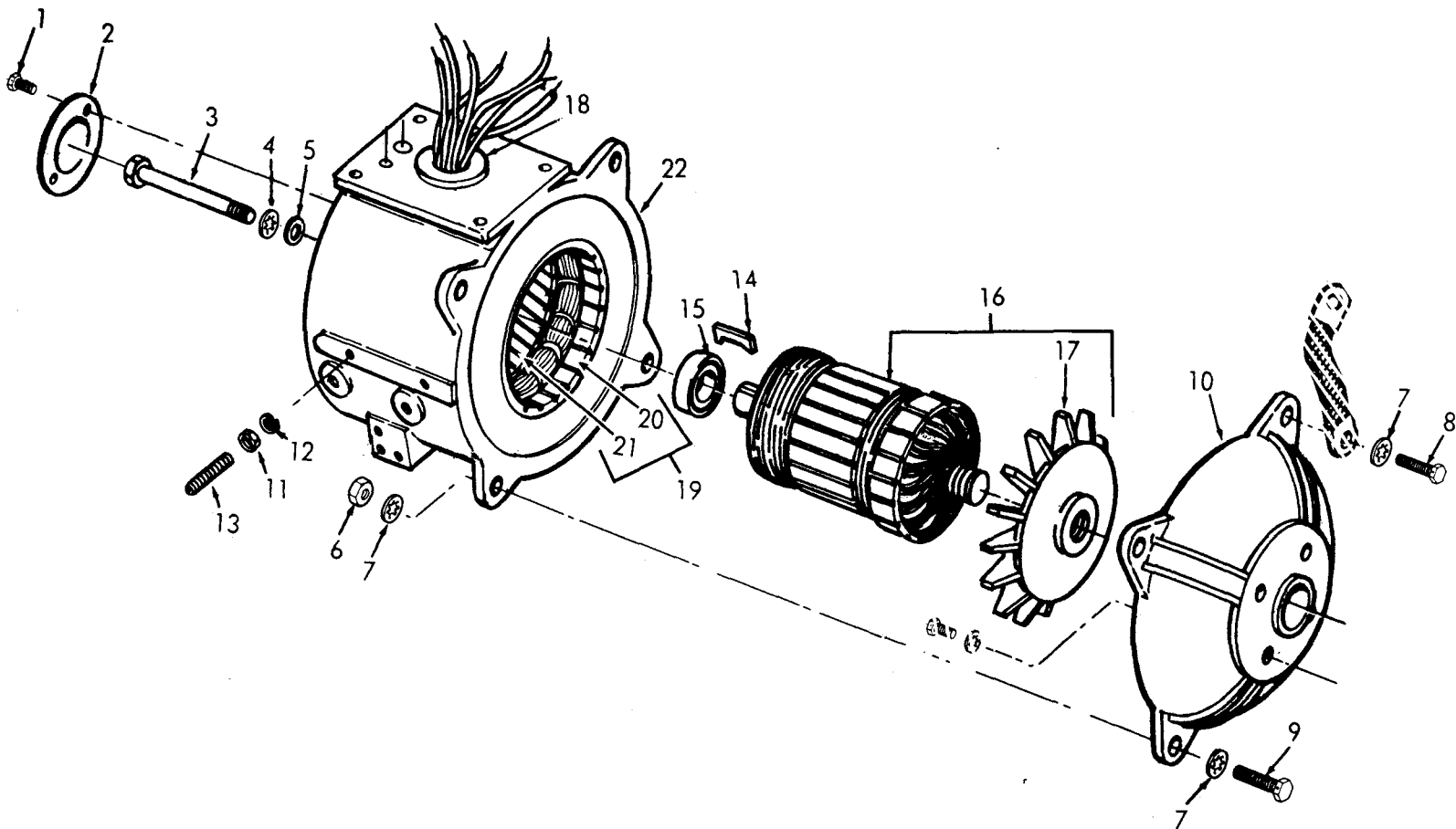


FIGURE No. 6. GENERATOR

ME 6115-329-25P/6

SECTION VII. INDEX - FEDERAL STOCK NUMBER AND REFERENCE NUMBER
 CROSS-REFERENCE TO FIGURE AND ITEM NUMBER

STOCK NUMBER	FIGURE NO.	ITEM NO.	STOCK NUMBER	FIGURE NO.	ITEM NO.
2590-944-6254	2	12	5320-721-5210	2	14
	3	4		3	5
2805-068-7510	1	13	5320-958-1154	2	7
2910-065-6793	4	17	5340-454-7527	2	55
	5	9		3	46
2910-472-5526	4	1	5340-990-8804	1	3
2910-510-6673	4	4	5355-959-3161	2	44
2910-904-2645	5	5		3	33
2910-936-5015	5	1	5905-688-4186	3	35
2910-936-5016	4	18	5905-764-4885	2	46
3110-052-1601	6	15	5905-860-7319	3	36
4820-925-7374	4	5	5910-835-1941	2	38
5305-022-8322	6	1		3	38
5305-059-3663	5	3	5925-938-2840	2	47
5305-071-2242	6	8	5930-557-5175	3	28
5305-225-3839	6	9	5930-615-7897	3	32
5305-696-5115	2	11	5930-655-1575	3	32
5305-717-6494	3	34	5940-926-9827	1	11
5305-717-6949	2	45	5940-948-0349	2	53
5305-727-5751	2	13		3	42
	3	7	5961-936-8141	3	22
5305-728-6266	6	13	5961-936-8142	3	21
5305-827-1520	1	9	5961-938-2842	2	36
5305-889-2999	2	41	5961-938-2843	2	34
	3	30	5961-987-4556	2	35
5305-889-3000	2	23	5961-992-8512	2	33
	3	15	5999-056-7805	3	23
5305-889-3116	2	30	6110-023-5050	2	37
	3	19	6110-252-2113	3	25
5305-984-4992	2	24	6110-400-2136	3	
	3	16	6110-936-5019	3	
5305-984-6191	2	25	6110-936-5022	2	
5305-984-6193	2	61	6110-936-5024	3	25
5305-984-6194	2	51	6115-023-5029	6	
	3	39	6115-023-5039	6	16
5305-984-6195	2	5	6115-023-5040	6	
5305-984-6197	2	4	6115-124-0574	6	
5305-989-7435	2	49	6115-221-8652	6	19
5305-993-1851	4	7	6115-223-2504	2	26
5306-018-6491	3	3		3	24
5306-018-7979	1	6	6115-443-4715	6	19
	4	13	6115-497-9973	6	19
	5	2	6115-936-5021	6	16
5306-051-4091	6	3	6625-068-0562	2	42
5306-142-4854	1	1	6625-078-6377	2	43
5310-012-0361	6	11	6625-079-7443	3	31
5310-043-2226	6	12	6150-057-6749	4	12
5310-081-4219	6	5	6150-057-6751	1	4
5310-088-1251	1	8	6150-996-7352	6	17
	2	9			
	3	2			
	4	11			
	6	6			
5310-167-0721	2	10			
	6	4			
5310-209-0760	3	41			
5310-433-0738	2	56			
	3	47			
5310-514-6674	1	2			
5310-550-1130	1	12			
	2	32			
	3	1			
	6	7			
5310-559-0070	2	2			
5310-682-5491	2	52			
	3	40			
5310-768-0319	2	31			
	3	20			
5310-807-1466	2	1			
5310-807-1467	4	6			
5310-809-8544	2	3			
5310-902-6676	2	48			
	3	26			
5310-905-8451	2	22			
	3	14			
5310-925-9645	2	29			
	3	18			
5310-941-6019	2	27			
	3	38			
5320-208-9632	2	57			
	3	48			
5320-584-9078	3	37			
	4	14			

SECTION VII. INDEX-FEDERAL STOCK NUMBER AND REFERENCE NUMBER
 CROSS-REFERENCE TO FIGURE AND ITEM NUMBER

REFERENCE NO.	MFG CODE	FIG NO.	ITEM NO.	REFERENCE NO.	MFG CODE	FIG NO.	ITEM NO.
CP12A1KF104K3	81349	2	38	TYPE37TB11	81349	2	25
	81349	3	38	TYPE37TB89	9797403	3	17
FP16715-1	10100	4	1	1A08111	81336	1	13
J2049-1D	76005	2	56	13208E5768	97403	4	5
	76005	3	47	13208E5820-2	97403	2	53
MS124655	96906	5	14		97403	3	42
MS17351-8	96906	4	15	13208E5834	97403	4	17
MS20427-4C7	96906	2	57		97403	5	9
	96906	3	48	13208E5853-21	97403	1	4
MS20470A4-4	96906	3	37	13208E5853-9	97403	4	12
	96906	4	14	13208E8524	97403	3	31
MS20470A4-5	96906	2	14	13208E8534	97403	2	42
	96906	3	5	13208E8535	97403	2	43
MS20604AD4HA2	96906	2	7	13211E4854-4	97403	5	12
MS21042-08	96906	2	1	12313E0001-1	97403	6	
MS21042-3	96906	4	6	13213E0001-2	97403	6	
MS21083N04	96906	2	29	13213E0002	97403	3	
	96906	3	18	13213E0005	97403	6	21
MS21083N06	96906	2	22	13213E0013	97403	2	15
	96906	3	14		97403	3	6
MS21083N08	96906	2	27	13213E0019	97403	2	59
	96906	3	38		97403	3	50
MS21083N3	96906	2	48	13213E0023	97403	1	7
	96906	3	26	13213E0024	97403	1	7
MS25126E3	96906	3	28	13213E0030	97403	6	17
MS27183-12	96906	6	5	13213E0032	97403	6	22
MS27183-7	96906	2	3	13213E0033	97403	6	10
MS35059-22	96906	2	32	13213E0034	97403	2	16
MS35059-31	96906	3	32		97403	3	8
MS35206-213	96906	2	30	13213E0035	97403	3	51
	96906	3	19	13213E0037-2	97403	2	55
MS35206-217	96906	2	41		97403	3	46
	96906	3	30	13213E0038	97403	3	29
MS35206-230	96906	2	23	13213E0042	97403	2	26
	96906	3	15		97403	3	24
MS35206-232	96906	2	24	13213E0044	97403	3	23
	96906	3	16	13213E0046	97403	6	2
MS35206-243	96906	2	28	13213E0051	97403	1	11
MS35206-245	96906	2	61	13213E0052	97403	1	3
MS35206-246	96906	2	51	13213E0056	97403	5	1
	96906	3	39	13213E0057	97403	1	10
MS35206-247	96906	2	5	13213E0058	97403	4	20
MS35206-249	96906	2	4	13213E0060	97403	4	19
MS35207-264	96906	2	49	13213E0062	97403	4	18
MS35207-267	96906	4	7	13213E0064	97403	2	54
MS35333-38	96906	2	2		97403	3	43
MS35333-40	96906	1	12	13213E0067	97403	2	20
	96906	2	32		97403	3	10
	96906	3	1	13213E0068	97403	3	9
	96906	6	7	13213E0070	97403	6	16
MS35333-41	96906	2	10	13213E0071-1	97403	3	21
	96906	6	4	13213E0071-2	97403	3	22
MS35335-34	96906	1	2	13213E0071-3	97403	2	35
MS35335-75	96906	3	41	13213E0071-4	97403	2	33
MS35338-24	96906	6	12	13213E0073-1	97403	6	20
MS35489-16	96906	2	40	13213E0073-2	97403	6	20
	96906	3	45	13213E0075	97403	1	5
MS35620-412	96906	3	40	13213E0099-1	97403	3	35
MS35649-102	96906	6	11	13213E0103	97403	3	25
MS39161-4	96906	4	3	13213E0104	97403	2	19
MS51096-331	96906	1	1	13213E0105	97403	2	36
MS51099-6	96906	1	9	13213E0106	97403	2	
MS51922-1	96906	1	8	13213E0107	97403	2	34
	96906	2	9	13213E0109	97403	6	21
	96906	3	2	13213E0134	97403	2	60
	96906	4	11	13213E0136	97403	2	39
	96906	6	6		97403	3	44
MS51958-67	96906	5	3	13213E0137	97403	2	47
MS51963-10	96906	2	45	13213E0138	97403	2	21
	96906	3	34		97403	3	13
MS51968-2	96906	2	31	13213E0140	97403	2	37
	96906	3	20	13213E0151	97403	2	6
MS51973-43	96906	6	13	13213E0153	97403	6	
MS87006-2	96906	5	6	13213E0154	97403	3	
MS90725-8	96906	6	9	13213E0159	97403	3	51
MS90725-9	96906	6	8	13213E0160	97403	6	21
MS90727-49	96906	6	3	13213E0164	97403	6	20
MS91528-0K1B	96906	2	44	13213E0168	97403	6	14
	96906	3	33	13213E0169	97403	6	15
RP061SB501KK	81349	2	46	13213E0170	97403	6	16
R3190-57	92071	4	8	13213E0172	97403	6	22
R3190-65	92071	4	9	13213E0181	97403	3	9
R319066	92071	4	10	13213E0082-1	97403	6	18

SECTION VII. INDEX-FEDERAL STOCK NUMBER AND REFERENCE NUMBER
 CROSS-REFERENCE TO FIGURE AND ITEM NUMBER

REFERENCE NO.	MFG CODE	FIG NO.	ITEM NO.	REFERENCE NO.	MFG CODE	FIG NO.	ITEM NO.
13213E0184	97403	3	25	1321E6394	97403	6	19
13213E4065	97403	5	8	13217E6395	97403	6	19
13213E4208	97403	2	8	13217E6398	97403	5	13
13213E5162	97403	2	17	13217E6399	97403	5	11
	97403	3	11	13217E6400	97403	5	
13213E5163-3	97403	2	18	13217E6401	97403	2	8
	97403	3	12	186491	00000	2	11
13213E5164	97403	2	58		00000	3	3
	97403	3	49	187979	00000	1	6
132140115	97403	5	5		00000	4	13
13214E8865	97403	2	62		00000	5	2
13214E8867	97403	4	4	20M223	99246	2	50
13214E5391	97403	5	10	228322	00000	6	1
13217E6387-3	97403	5	4	441375	00000	2	12
13217E6393	97403	6	19		00000	3	7

ITEMS NOT ILLUSTRATED

STOCK NUMBER	GROUP NO.	PAGE NO.
6115-990-8770	01	1
	01	5

REFERENCE NO.	MFG CODE	GROUP NO.	PAGE NO.	REFERENCE NO.	MFG CODE	GROUP NO.	PAGE NO.
MS25036-53	96906	02	15	13213E0108-29	97403	2	9
MS25036-54	96906	02	15	13213E0108-31	97403	2	9
MS25036-6	96906	02	15	13213E0108-32	97403	2	9
13213E0008-2	97403	02	14	13213E0108-33	97403	2	9
13213E0008-3	97403	02	14	13213E0108-34	97403	2	9
13213E0008-4	97403	02	14	13213E0108-35	97403	2	9
13213E0008-5	97403	02	14	13213E0108-36	97403	2	10
13213E0008-8	97403	02	14	13213E0108-37	97403	2	10
13213E0008-9	97403	02	14	13213E0108-38	97403	2	10
13213E0008-10	97403	02	14	13213E0108-39	97403	2	10
13213E0008-12	97403	02	14	13213E0108-40	97403	2	10
13213E0008-14	97403	02	14	13213E0108-41	97403	2	10
13213E0008-15	97403	02	15	13213E0108-42	97403	2	10
13213E0008-17	97403	02	15	13213E0108-43	97403	2	10
13213E0008-18	97403	02	15	13213E0183-2	97403	2	13
13213E0008-19	97403	02	15	13213E0183-3	97403	2	13
13213E0008-20	97403	02	15	13213E0183-4	97403	2	13
13213E0008-22	97403	02	15	13213E0183-5	97403	2	13
13213E0008-24	97403	02	15	13213E0183-7	97403	2	13
13213E0008-26	97403	02	15	13213E0183-8	97403	2	13
13213E0008-28	97403	02	15	13213E0183-10	97403	2	13
13213E0008-30	97403	02	15	13213E0183-12	97403	2	13
13213E0008-32	97403	02	15	13213E0183-13	97403	2	13
13213E0008-34	97403	02	15	13213E0183-14	97403	2	13
13213E0008-35	97403	02	15	13213E0183-15	97403	2	13
13213E00083	97403	01	7	13213E0183-16	97403	2	13
13213E0108-2	97403	02	8	13213E0183-17	97403	2	14
13213E0108-3	97403	02	8	13213E0183-18	97403	2	14
13213E0108-3	97403	02	5	13213E0183-19	97403	2	14
	97403	02	1	13213E0183-20	97403	2	14
13213E0108-4	97403	02	8	13213E0183-21	97403	2	14
13213E0108-6	97403	02	8	13213E0183-22	97403	2	14
13213E0108-7	97403	02	9	13213E0183-23	97403	2	14
13213E0108-9	97403	02	9	13213E0183-24	97403	2	14
13213E0108-10	97403	02	9	13213E0183-25	97403	2	14
13213E0108-12	97403	02	9	13213E0183-30	97403	2	14
13213E0108-13	97403	02	9	13213E0183-31	97403	2	14
13213E0108-14	97403	02	9				
13213E0108-16	97403	02	9				
13213E0108-17	97403	02	9				
13213E0108-19	97403	02	9				
13213E0108-20	97403	02	9				
13213E0108-22	97403	02	9				
13213E0108-23	97403	02	9				
13213E0108-25	97403	02	9				
13213E0108-27	97403	02	9				

By Order of the Secretary of the Army:

W. C. WESTMORELAND,
General, United States Army,
Chief of Staff.

Official:

KENNETH G. WICKHAM,
Major General, United States Army,
The Adjutant General.

Distribution:

To be distributed in accordance with DA Form 12-25, Section IV, Organizational maintenance requirements for Generator Sets, Engine Driven, 5 KW, 60 and 400 cycle.

TM 5-6115-329-25P GENERATOR SET GASOLINE ENGINE DRIVEN-1970